

February 26, 2001

Manitoba Energy and Mines
1395 Ellice Avenue
Suite 360
Winnipeg, MB
R3G 3P2

Chevron Canada Resources

500-5th Ave SW
Calgary, AB
T2P 0L7

R.L. (Rod) Gibbons

Petroleum Engineer
Phone No. 403-234-5366
Fax No. 403-2345313

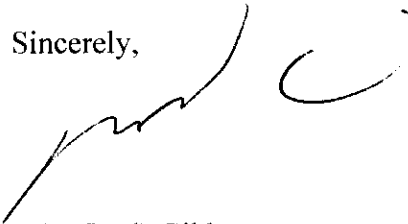
RE: ROSELEA UNIT NO. 3 ANNUAL PROGRESS REPORT

To whom it may concern,

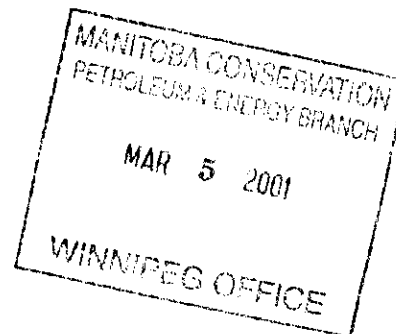
Enclosed for your information is the 2000 Roselea Unit #3 Annual Progress Report.

If you require any additional information, please contact me at (403)-234-5366 or at the above address.

Sincerely,



R.L. (Rod) Gibbons
Petroleum Engineer



Roselea Unit#3 Annual Progress Report

Roselea Unit#3 Annual Progress Report

The following table and graph summarizes the oil production rate, water injection rate, cumulative water injected, cumulative oil produced, cumulative water produced and water-oil ratio during each month for Roselea Unit#3.

| Date | Oil Cal (m3/d) | Water Cal (m3/d) | WtrInj Cal (m3/d) | WtrInj Cum (m3) | Oil Cum (m3) | Water Cum (m3) | WOR (m3/m3) |
|--------|----------------------|------------------------|-------------------------|-----------------------|--------------------|----------------------|----------------|
| Oct-00 | 43 | 1025 | 1025.1 | 17723980 | 2402694 | 18608339 | 23.8 |
| Sep-00 | 43.8 | 1089.7 | 1089.7 | 17692203 | 2401360 | 18576563 | 24.9 |
| Aug-00 | 42.7 | 1060.6 | 1060.6 | 17659513 | 2400046 | 18543872 | 24.9 |
| Jul-00 | 43 | 945.1 | 945.2 | 17626635 | 2398723 | 18510992 | 22 |
| Jun-00 | 44.9 | 1096.7 | 1096.8 | 17597335 | 2397390 | 18481692 | 24.4 |
| May-00 | 44.4 | 1031 | 1031.1 | 17564432 | 2396045 | 18448791 | 23.2 |
| Apr-00 | 43.2 | 1110 | 1109.9 | 17532468 | 2394669 | 18416829 | 25.7 |
| Mar-00 | 45.1 | 1068.1 | 1068.1 | 17499171 | 2393374 | 18383530 | 23.7 |
| Feb-00 | 44.7 | 1077.2 | 728.2 | 17466059 | 2391976 | 18350418 | 24.1 |
| Jan-00 | 43.7 | 735.6 | 735.6 | 17444940 | 2390681 | 18319179 | 16.8 |
| Dec-99 | 43.6 | 721.9 | 721.9 | 17422137 | 2389326 | 18296376 | 16.6 |
| Nov-99 | 42.3 | 892.4 | 649.9 | 17399757 | 2387976 | 18273996 | 21.1 |
| Oct-99 | 41.8 | 668.2 | 668.2 | 17380260 | 2386708 | 18247224 | 16 |
| Sep-99 | 44.3 | 680 | 679.9 | 17359545 | 2385412 | 18226511 | 15.3 |
| Aug-99 | 41.6 | 1007.4 | 1007.4 | 17339147 | 2384083 | 18206112 | 24.2 |
| Jul-99 | 42.4 | 1191.1 | 1261.4 | 17307918 | 2382794 | 18174883 | 28.1 |
| Jun-99 | 42.8 | 1236 | 1236 | 17268815 | 2381480 | 18137959 | 28.9 |
| May-99 | 39.8 | 830.7 | 830.6 | 17231735 | 2380195 | 18100878 | 20.9 |
| Apr-99 | 39.9 | 836.8 | 836.8 | 17205987 | 2378962 | 18075127 | 20.9 |
| Mar-99 | 43.2 | 967.4 | 3830.3 | 17180882 | 2377764 | 18050022 | 22.4 |
| Feb-99 | 51.1 | 1121.7 | 1121.7 | 17062144 | 2376425 | 18020034 | 21.9 |
| Jan-99 | 49.2 | 874.4 | 874.4 | 17030736 | 2374994 | 17988626 | 17.8 |
| Dec-98 | 50.8 | 976.3 | 976.3 | 17003631 | 2373467 | 17961521 | 19.2 |
| Nov-98 | 50.9 | 1028.9 | 1028.9 | 16973366 | 2371891 | 17931256 | 20.2 |
| Oct-98 | 50.8 | 1428.2 | 1428.2 | 16942500 | 2370364 | 17900390 | 28.1 |
| Sep-98 | 51.9 | 771.2 | 771.2 | 16898227 | 2368790 | 17856117 | 14.9 |
| Aug-98 | 50.7 | 969.3 | 793.7 | 16875091 | 2367232 | 17832981 | 19.1 |
| Jul-98 | 52.4 | 1073.7 | 1073.7 | 16850485 | 2365661 | 17802933 | 20.5 |
| Jun-98 | 52.3 | 1119.3 | 1113.4 | 16817200 | 2364036 | 17769648 | 21.4 |
| May-98 | 52.8 | 1545.2 | 1146.9 | 16783798 | 2362467 | 17736068 | 29.2 |
| Apr-98 | 54.2 | 1093.8 | 1095.3 | 16748243 | 2360829 | 17688168 | 20.2 |
| Mar-98 | 53.3 | 1187.5 | 1189.5 | 16715383 | 2359203 | 17655354 | 22.3 |
| Feb-98 | 53.8 | 1177.7 | 1178.6 | 16678508 | 2357550 | 17618541 | 21.9 |
| Jan-98 | 54.1 | 1172.1 | 1172.2 | 16645506 | 2356045 | 17585567 | 21.7 |
| Dec-97 | 54.8 | 1174.7 | 1175.7 | 16609169 | 2354367 | 17549233 | 21.4 |
| Nov-97 | 55.3 | 1170 | 1170.7 | 16572723 | 2352669 | 17512816 | 21.1 |
| Oct-97 | 55.6 | 1215.3 | 1216.4 | 16537602 | 2351009 | 17477717 | 21.8 |
| Sep-97 | 55.8 | 1138.6 | 1138.7 | 16499895 | 2349285 | 17440043 | 20.4 |
| Aug-97 | 54.6 | 1013.1 | 1013.1 | 16465734 | 2347611 | 17405884 | 18.6 |
| Jul-97 | 53.7 | 1226.4 | 1227.1 | 16434328 | 2345919 | 17374478 | 22.9 |
| Jun-97 | 54.5 | 1245 | 1244.7 | 16396288 | 2344255 | 17336461 | 22.8 |

| | | | | | | | |
|--------|------|--------|--------|----------|---------|----------|------|
| May-97 | 53.9 | 1151.5 | 1151.6 | 16358948 | 2342620 | 17299111 | 21.4 |
| Apr-97 | 55 | 1305.4 | 1305.5 | 16323247 | 2340949 | 17263413 | 23.7 |
| Mar-97 | 54.7 | 1164 | 1163.7 | 16284083 | 2339300 | 17224250 | 21.3 |
| Feb-97 | 55.4 | 1164.5 | 1164.6 | 16248008 | 2337606 | 17188166 | 21 |
| Jan-97 | 55.9 | 1136.6 | 1136.8 | 16215400 | 2336055 | 17155561 | 20.3 |
| Dec-96 | 55.9 | 1133.9 | 1133.5 | 16180160 | 2334322 | 17120325 | 20.3 |
| Nov-96 | 56.9 | 1157.1 | 1157.2 | 16145021 | 2332589 | 17085173 | 20.3 |
| Oct-96 | 56 | 1251.5 | 1251.5 | 16110306 | 2330882 | 17050459 | 22.4 |
| Sep-96 | 56.8 | 1328.2 | 1327.7 | 16071508 | 2329147 | 17011662 | 23.4 |
| Aug-96 | 56.6 | 1290.4 | 1290.2 | 16031677 | 2327444 | 16971817 | 22.8 |
| Jul-96 | 56.4 | 1212.5 | 1212.5 | 15991680 | 2325689 | 16931814 | 21.5 |
| Jun-96 | 58.3 | 1156 | 1142.8 | 15954093 | 2323941 | 16894227 | 19.8 |
| May-96 | 59.1 | 1280.4 | 1270.3 | 15919810 | 2322193 | 16859546 | 21.7 |
| Apr-96 | 58 | 1200 | 1198.6 | 15880430 | 2320361 | 16819852 | 20.7 |
| Mar-96 | 58.5 | 1286.3 | 1286.4 | 15844473 | 2318620 | 16783853 | 22 |
| Feb-96 | 57.8 | 1283.6 | 1284.1 | 15804594 | 2316806 | 16743977 | 22.2 |
| Jan-96 | 59.2 | 1227.5 | 1227.6 | 15767356 | 2315129 | 16706753 | 20.7 |
| Dec-95 | 59.3 | 1245.9 | 1245.3 | 15729301 | 2313294 | 16668700 | 21 |
| Nov-95 | 60.7 | 1260.1 | 1249.7 | 15690697 | 2311456 | 16630079 | 20.8 |
| Oct-95 | 60.5 | 1273.5 | 1271.7 | 15653205 | 2309637 | 16592277 | 21.1 |
| Sep-95 | 59.4 | 1216.7 | 1204.5 | 15613781 | 2307763 | 16552797 | 20.5 |
| Aug-95 | 59.8 | 1210.8 | 1194.1 | 15577647 | 2305979 | 16516295 | 20.2 |
| Jul-95 | 59.6 | 1254.3 | 1247.2 | 15540630 | 2304126 | 16478760 | 21 |
| Jun-95 | 58 | 1110.4 | 1106.5 | 15501968 | 2302278 | 16439877 | 19.2 |
| May-95 | 58.2 | 1197.1 | 1193.2 | 15468773 | 2300540 | 16406565 | 20.6 |
| Apr-95 | 57.1 | 1187.1 | 1186.8 | 15431784 | 2298735 | 16369453 | 20.8 |
| Mar-95 | 61.7 | 1381.7 | 1381.5 | 15396180 | 2297023 | 16333842 | 22.4 |
| Feb-95 | 63.3 | 1298.1 | 1280.7 | 15353353 | 2295110 | 16291009 | 20.5 |
| Jan-95 | 62.3 | 1331.4 | 1331.5 | 15317493 | 2293336 | 16254664 | 21.4 |
| Dec-94 | 63.7 | 1261.7 | 1261.3 | 15276216 | 2291405 | 16213390 | 19.8 |
| Nov-94 | 63.2 | 1280.3 | 1270.4 | 15237117 | 2289431 | 16174277 | 20.2 |
| Oct-94 | 63.3 | 1264.6 | 1245.5 | 15199005 | 2287534 | 16135868 | 20 |
| Sep-94 | 65.3 | 1306 | 1303.7 | 15160396 | 2285571 | 16096665 | 20 |
| Aug-94 | 64.7 | 1118.7 | 1119.1 | 15121285 | 2283611 | 16057484 | 17.3 |
| Jul-94 | 63.8 | 1179.3 | 1174.6 | 15086592 | 2281604 | 16022804 | 18.5 |
| Jun-94 | 65.2 | 1281.1 | 1283.2 | 15050180 | 2279625 | 15986245 | 19.6 |
| May-94 | 61.5 | 1295.7 | 1302.2 | 15011683 | 2277668 | 15947814 | 21.1 |
| Apr-94 | 66.1 | 1238.4 | 1236.9 | 14971316 | 2275763 | 15907648 | 18.7 |
| Mar-94 | 64.5 | 1213.5 | 1209.9 | 14934209 | 2273780 | 15870496 | 18.8 |
| Feb-94 | 66 | 1256 | 1260.6 | 14896703 | 2271780 | 15832878 | 19 |
| Jan-94 | 65.5 | 1410.1 | 1252.2 | 14861405 | 2269932 | 15797709 | 21.5 |
| Dec-93 | 65.5 | 1289 | 1301.9 | 14822587 | 2267903 | 15753995 | 19.7 |
| Nov-93 | 65.2 | 1277.7 | 1267 | 14782227 | 2265874 | 15714037 | 19.6 |
| Oct-93 | 66 | 1238.4 | 1339 | 14744218 | 2263918 | 15675706 | 18.8 |
| Sep-93 | 70.9 | 1254.4 | 1235 | 14702710 | 2261870 | 15637317 | 17.7 |
| Aug-93 | 68.5 | 997.2 | 965.1 | 14665659 | 2259742 | 15599685 | 14.5 |
| Jul-93 | 68.5 | 1328.5 | 995.7 | 14635741 | 2257618 | 15568773 | 19.4 |
| Jun-93 | 67.4 | 1400.3 | 1351.2 | 14604875 | 2255493 | 15527589 | 20.8 |
| May-93 | 69.3 | 1375.9 | 1355.4 | 14564340 | 2253470 | 15485580 | 19.9 |

| | | | | | | | |
|--------|------|--------|--------|----------|---------|----------|------|
| Apr-93 | 69.4 | 1414.2 | 1399.9 | 14522323 | 2251324 | 15442927 | 20.4 |
| Mar-93 | 68.6 | 1419.1 | 1418.9 | 14480326 | 2249241 | 15400502 | 20.7 |
| Feb-93 | 63.6 | 1397.1 | 1381.4 | 14436340 | 2247115 | 15356510 | 22 |
| Jan-93 | 67.6 | 1223 | 1204.5 | 14397660 | 2245334 | 15317392 | 18.1 |
| Dec-92 | 70.4 | 1273.2 | 963.2 | 14360320 | 2243238 | 15279478 | 18.1 |
| Nov-92 | 70.1 | 1752.8 | 1247.7 | 14330461 | 2241055 | 15240009 | 25 |
| Oct-92 | 72.6 | 1945.4 | 1437.9 | 14293029 | 2238952 | 15187424 | 26.8 |
| Sep-92 | 71.3 | 1909.4 | 1402.4 | 14248454 | 2236700 | 15127118 | 26.8 |
| Aug-92 | 74.3 | 2048.5 | 1549.2 | 14206382 | 2234562 | 15069836 | 27.6 |
| Jul-92 | 74.4 | 2070.6 | 1583.1 | 14158357 | 2232257 | 15006334 | 27.8 |
| Jun-92 | 76.1 | 2043.5 | 1562.1 | 14109282 | 2229950 | 14942146 | 26.8 |
| May-92 | 73 | 1890.2 | 1387.9 | 14062419 | 2227666 | 14880842 | 25.9 |
| Apr-92 | 73.7 | 1440.6 | 1440.6 | 14019393 | 2225403 | 14822245 | 19.5 |
| Mar-92 | 75 | 1645.2 | 1207.7 | 13976174 | 2223191 | 14779026 | 21.9 |
| Feb-92 | 76.3 | 1723.1 | 1256.3 | 13938735 | 2220865 | 14728025 | 22.6 |
| Jan-92 | 76.4 | 1765.9 | 1263.8 | 13902302 | 2218652 | 14678054 | 23.1 |
| Dec-91 | 78.1 | 1818.3 | 1313.4 | 13863123 | 2216282 | 14623312 | 23.3 |
| Nov-91 | 74.1 | 1913.4 | 1435.9 | 13822408 | 2213862 | 14566946 | 25.8 |
| Oct-91 | 76.1 | 1869.8 | 1370.3 | 13779330 | 2211639 | 14509543 | 24.6 |
| Sep-91 | 76.6 | 1954.8 | 1476.6 | 13736852 | 2209281 | 14451581 | 25.5 |
| Aug-91 | 79.8 | 1813.5 | 1371.6 | 13692554 | 2206983 | 14392937 | 22.7 |
| Jul-91 | 80.2 | 1868.9 | 1410.5 | 13650034 | 2204509 | 14336717 | 23.3 |
| Jun-91 | 81.7 | 1841.1 | 1384.4 | 13606310 | 2202023 | 14278782 | 22.5 |
| May-91 | 81.4 | 1878.1 | 1417.4 | 13564777 | 2199572 | 14223550 | 23.1 |
| Apr-91 | 79.8 | 1956.2 | 1499 | 13520839 | 2197049 | 14165328 | 24.5 |
| Mar-91 | 78.5 | 1934.2 | 1514.6 | 13475869 | 2194654 | 14106642 | 24.6 |
| Feb-91 | 82.8 | 1968.7 | 1482.1 | 13428915 | 2192221 | 14046681 | 23.8 |
| Jan-91 | 81.8 | 1815.6 | 1377 | 13387415 | 2189901 | 13991558 | 22.2 |
| Dec-90 | 81.4 | 1975.1 | 1523.7 | 13344727 | 2187367 | 13935273 | 24.3 |
| Nov-90 | 81.7 | 1901.1 | 1446.1 | 13297491 | 2184844 | 13874046 | 23.3 |
| Oct-90 | 82.2 | 1829 | 1440.6 | 13254108 | 2182392 | 13817012 | 22.3 |
| Sep-90 | 84 | 1727.6 | 1388.1 | 13209448 | 2179844 | 13760313 | 20.6 |
| Aug-90 | 84.1 | 1687.2 | 1364.6 | 13167804 | 2177324 | 13708484 | 20.1 |
| Jul-90 | 85.9 | 1826.4 | 1445.8 | 13125501 | 2174716 | 13656180 | 21.3 |
| Jun-90 | 83.8 | 1899 | 1470.9 | 13080681 | 2172054 | 13599561 | 22.7 |
| May-90 | 82.5 | 1828.2 | 1430.4 | 13036555 | 2169540 | 13542591 | 22.2 |
| Apr-90 | 80.4 | 1924 | 1512.3 | 12992214 | 2166984 | 13485916 | 23.9 |
| Mar-90 | 83.2 | 1987.5 | 1550.1 | 12946846 | 2164572 | 13428195 | 23.9 |
| Feb-90 | 84 | 1938.6 | 1513.3 | 12898792 | 2161993 | 13366583 | 23.1 |
| Jan-90 | 81.7 | 1977.3 | 1530 | 12856420 | 2159642 | 13312301 | 24.2 |
| Dec-89 | 84.8 | 1973.9 | 1539.5 | 12808991 | 2157108 | 13251005 | 23.3 |
| Nov-89 | 84.6 | 1969.6 | 1527.6 | 12761266 | 2154479 | 13189815 | 23.3 |
| Oct-89 | 86.3 | 2007.9 | 1533.3 | 12715437 | 2151941 | 13130727 | 23.3 |
| Sep-89 | 87 | 1974.1 | 1514.3 | 12667904 | 2149267 | 13068481 | 22.7 |
| Aug-89 | 80.2 | 1835.8 | 1453.6 | 12622476 | 2146658 | 13009259 | 22.9 |
| Jul-89 | 87.7 | 1801.4 | 1391 | 12577414 | 2144171 | 12952350 | 20.5 |
| Jun-89 | 85.9 | 1902.1 | 1470.1 | 12534294 | 2141452 | 12896508 | 22.1 |
| May-89 | 86.2 | 1869.4 | 1466.3 | 12490192 | 2138875 | 12839445 | 21.7 |
| Apr-89 | 85.4 | 1871.5 | 1391 | 12444738 | 2136204 | 12781494 | 21.9 |

| | | | | | | | |
|--------|-------|--------|--------|----------|---------|----------|------|
| Mar-89 | 86.2 | 1893.6 | 1459.3 | 12403007 | 2133643 | 12725349 | 22 |
| Feb-89 | 92.6 | 1944.6 | 1525.4 | 12357770 | 2130970 | 12666647 | 21 |
| Jan-89 | 87.5 | 1932.6 | 1477.9 | 12315060 | 2128378 | 12612197 | 22.1 |
| Dec-88 | 89.2 | 1864.1 | 1509 | 12269244 | 2125665 | 12552287 | 20.9 |
| Nov-88 | 85.5 | 1948.9 | 1527.4 | 12222465 | 2122899 | 12494501 | 22.8 |
| Oct-88 | 90.7 | 1806.6 | 1401.9 | 12176642 | 2120333 | 12436034 | 19.9 |
| Sep-88 | 91.6 | 1795.9 | 1421.5 | 12133182 | 2117521 | 12380028 | 19.6 |
| Aug-88 | 83.7 | 1783.2 | 1450.3 | 12090536 | 2114771 | 12326150 | 21.3 |
| Jul-88 | 95.5 | 1865.8 | 1529.6 | 12045578 | 2112176 | 12270870 | 19.5 |
| Jun-88 | 89.7 | 1979 | 1514.5 | 11998160 | 2109215 | 12213029 | 22.1 |
| May-88 | 93.9 | 1881.9 | 1565.3 | 11952724 | 2106523 | 12153658 | 20 |
| Apr-88 | 89.4 | 2037.8 | 1562.2 | 11904200 | 2103612 | 12095319 | 22.8 |
| Mar-88 | 90 | 1997.2 | 1544.9 | 11857334 | 2100930 | 12034186 | 22.2 |
| Feb-88 | 88.5 | 1977.1 | 1537.3 | 11809441 | 2098138 | 11972274 | 22.3 |
| Jan-88 | 91.9 | 1958 | 1505.4 | 11764859 | 2095572 | 11914938 | 21.3 |
| Dec-87 | 93.5 | 2018 | 1566.8 | 11718193 | 2092725 | 11854241 | 21.6 |
| Nov-87 | 93.3 | 1923 | 1460.6 | 11669621 | 2089828 | 11791682 | 20.6 |
| Oct-87 | 94 | 1928.8 | 1523.3 | 11625803 | 2087029 | 11733992 | 20.5 |
| Sep-87 | 95.3 | 1920.4 | 1500 | 11578581 | 2084113 | 11674201 | 20.2 |
| Aug-87 | 92.7 | 1926.2 | 1443.2 | 11533582 | 2081255 | 11616588 | 20.8 |
| Jul-87 | 93.5 | 2029.6 | 1591.6 | 11488844 | 2078383 | 11556875 | 21.7 |
| Jun-87 | 94.1 | 1927 | 1511.4 | 11439505 | 2075485 | 11493958 | 20.5 |
| May-87 | 91.9 | 2019.6 | 1542.6 | 11394164 | 2072660 | 11436147 | 22 |
| Apr-87 | 94.6 | 2121.1 | 1625.2 | 11346342 | 2069813 | 11373539 | 22.4 |
| Mar-87 | 97.7 | 2075.6 | 1601.9 | 11297586 | 2066975 | 11309906 | 21.2 |
| Feb-87 | 97.1 | 1936.1 | 1483 | 11247927 | 2063945 | 11245563 | 19.9 |
| Jan-87 | 93.7 | 1951.1 | 1511.5 | 11206403 | 2061227 | 11191352 | 20.8 |
| Dec-86 | 95 | 2081 | 1613.3 | 11159548 | 2058323 | 11130867 | 21.9 |
| Nov-86 | 95.8 | 2011.2 | 1568.8 | 11109535 | 2055379 | 11066356 | 21 |
| Oct-86 | 89.3 | 2103.4 | 1564.7 | 11062472 | 2052504 | 11006021 | 23.5 |
| Sep-86 | 104.8 | 2023.5 | 1571.7 | 11013965 | 2049735 | 10940815 | 19.3 |
| Aug-86 | 93.9 | 2008.6 | 1550.9 | 10966814 | 2046591 | 10880109 | 21.4 |
| Jul-86 | 94.5 | 2044.7 | 1525.1 | 10918735 | 2043679 | 10817843 | 21.6 |
| Jun-86 | 96.5 | 2047.2 | 1512.2 | 10871456 | 2040750 | 10754456 | 21.2 |
| May-86 | 95.3 | 2072.6 | 1619.3 | 10826089 | 2037856 | 10693040 | 21.8 |
| Apr-86 | 97.6 | 1975 | 1505.8 | 10775892 | 2034903 | 10628789 | 20.2 |
| Mar-86 | 85.8 | 1998.4 | 1579.4 | 10730719 | 2031974 | 10569540 | 23.3 |
| Feb-86 | 100.3 | 2043.6 | 1610.2 | 10681757 | 2029314 | 10507589 | 20.4 |
| Jan-86 | 90.8 | 1962.7 | 1504.5 | 10636672 | 2026505 | 10450369 | 21.6 |
| Dec-85 | 93.6 | 1920.2 | 1447.4 | 10590033 | 2023691 | 10389526 | 20.5 |
| Nov-85 | 102.2 | 2023.3 | 1568.6 | 10545165 | 2020789 | 10330000 | 19.8 |
| Oct-85 | 101.8 | 1957 | 1566.7 | 10498108 | 2017723 | 10269301 | 19.2 |
| Sep-85 | 102.5 | 2015.5 | 1538 | 10449541 | 2014567 | 10208635 | 19.7 |
| Aug-85 | 94.7 | 1808.5 | 1304.9 | 10403401 | 2011493 | 10148170 | 19.1 |
| Jul-85 | 106.4 | 1828.7 | 1430.9 | 10362948 | 2008556 | 10092105 | 17.2 |
| Jun-85 | 99.3 | 1852 | 1398.6 | 10318591 | 2005258 | 10035415 | 18.7 |
| May-85 | 101.6 | 2046.4 | 1548.3 | 10276634 | 2002280 | 9979855 | 20.2 |
| Apr-85 | 100.4 | 2037.3 | 1551.3 | 10228636 | 1999132 | 9916418 | 20.3 |
| Mar-85 | 98.2 | 1983.3 | 1498.1 | 10182096 | 1996120 | 9855299 | 20.2 |

| | | | | | | | |
|--------|-------|--------|--------|----------|---------|---------|------|
| Feb-85 | 100.5 | 1935.3 | 1475.1 | 10135655 | 1993074 | 9793815 | 19.3 |
| Jan-85 | 98.4 | 1879.8 | 1421.3 | 10094351 | 1990261 | 9739626 | 19.1 |
| Dec-84 | 99.7 | 1944.7 | 1480.9 | 10050290 | 1987210 | 9681354 | 19.5 |
| Nov-84 | 98.9 | 1927.6 | 1476.2 | 10004383 | 1984120 | 9621067 | 19.5 |
| Oct-84 | 103.1 | 1649 | 1277.1 | 9960097 | 1981154 | 9563239 | 16 |
| Sep-84 | 100.4 | 1917.5 | 1454.7 | 9920507 | 1977957 | 9512122 | 19.1 |
| Aug-84 | 97.5 | 1730.2 | 1302 | 9876867 | 1974946 | 9454598 | 17.7 |
| Jul-84 | 106.8 | 1805.4 | 1432.1 | 9836504 | 1971922 | 9400962 | 16.9 |
| Jun-84 | 104 | 1627.3 | 1242.1 | 9792110 | 1968610 | 9344995 | 15.7 |
| May-84 | 98.7 | 1875.6 | 1356.4 | 9754848 | 1965491 | 9296176 | 19 |
| Apr-84 | 108.8 | 2006.4 | 1399.1 | 9712799 | 1962432 | 9238033 | 18.4 |
| Mar-84 | 107.8 | 1856.3 | 1378.2 | 9670825 | 1959168 | 9177841 | 17.2 |
| Feb-84 | 107.8 | 1646.9 | 1346.2 | 9628102 | 1955826 | 9120296 | 15.3 |
| Jan-84 | 107.2 | 1770.9 | 1356.8 | 9589061 | 1952700 | 9072535 | 16.5 |
| Dec-83 | 117.1 | 1913.6 | 1454 | 9547001 | 1949375 | 9017638 | 16.3 |
| Nov-83 | 107.9 | 1842.8 | 1384.7 | 9501926 | 1945745 | 8958316 | 17.1 |
| Oct-83 | 119.1 | 1805.7 | 1366.3 | 9460384 | 1942509 | 8903031 | 15.2 |
| Sep-83 | 103.2 | 1778.8 | 1339.3 | 9418030 | 1938815 | 8847055 | 17.2 |
| Aug-83 | 110.9 | 1802.4 | 1365.9 | 9377851 | 1935721 | 8793691 | 16.2 |
| Jul-83 | 115.1 | 1780.5 | 1330.5 | 9335509 | 1932282 | 8737818 | 15.5 |
| Jun-83 | 112.9 | 1785.3 | 1336.6 | 9294262 | 1928713 | 8682623 | 15.8 |
| May-83 | 112.3 | 1886 | 1386.7 | 9254163 | 1925326 | 8629063 | 16.8 |
| Apr-83 | 108.8 | 1775.4 | 1345.4 | 9211176 | 1921844 | 8570597 | 16.3 |
| Mar-83 | 110.7 | 1798.9 | 1318.5 | 9170814 | 1918580 | 8517334 | 16.2 |
| Feb-83 | 116.4 | 1891 | 1420.8 | 9129942 | 1915148 | 8461568 | 16.2 |
| Jan-83 | 111.7 | 1847.7 | 1385.4 | 9090161 | 1911888 | 8408619 | 16.5 |
| Dec-82 | 121.7 | 1828.1 | 1392.1 | 9047214 | 1908425 | 8351339 | 15 |
| Nov-82 | 121.5 | 1832.7 | 1397.2 | 9004058 | 1904651 | 8294668 | 15.1 |
| Oct-82 | 120.2 | 1787.1 | 1339.2 | 8962141 | 1901006 | 8239685 | 14.9 |
| Sep-82 | 120.8 | 1687.7 | 1235.7 | 8920627 | 1897280 | 8184287 | 14 |
| Aug-82 | 102.7 | 1424.4 | 1019.6 | 8883557 | 1893657 | 8133656 | 13.9 |
| Jul-82 | 119.5 | 1588.3 | 1189.5 | 8851950 | 1890472 | 8089499 | 13.3 |
| Jun-82 | 113 | 1650.7 | 1223.6 | 8815077 | 1886767 | 8040260 | 14.6 |
| May-82 | 90.1 | 1610.9 | 1258.9 | 8778368 | 1883378 | 7990740 | 17.9 |
| Apr-82 | 120.5 | 1655.3 | 1203.6 | 8739341 | 1880584 | 7940802 | 13.7 |
| Mar-82 | 119.9 | 1674.4 | 1239 | 8703232 | 1876969 | 7891142 | 14 |
| Feb-82 | 122.9 | 1739.7 | 1311.2 | 8664822 | 1873252 | 7839234 | 14.2 |
| Jan-82 | 115 | 1680 | 1247.8 | 8628108 | 1869812 | 7790523 | 14.6 |
| Dec-81 | 118.9 | 1670 | 1214.7 | 8589426 | 1866248 | 7738445 | 14.1 |
| Nov-81 | 119.4 | 1685.7 | 1235.8 | 8551769 | 1862563 | 7686676 | 14.1 |
| Oct-81 | 119.5 | 1734.5 | 1277.4 | 8514696 | 1858981 | 7636103 | 14.5 |
| Sep-81 | 128.6 | 1630.8 | 1212.3 | 8475096 | 1855278 | 7582333 | 12.7 |
| Aug-81 | 125.3 | 1594.2 | 1178.4 | 8438728 | 1851419 | 7533410 | 12.7 |
| Jul-81 | 124.9 | 1490.6 | 1068.2 | 8402198 | 1847536 | 7483991 | 11.9 |
| Jun-81 | 129.5 | 1633.2 | 1216.2 | 8369085 | 1843663 | 7437781 | 12.6 |
| May-81 | 101.5 | 1336.2 | 986.4 | 8332599 | 1839779 | 7388784 | 13.2 |
| Apr-81 | 128.3 | 1622.5 | 1205.6 | 8302021 | 1836632 | 7347363 | 12.6 |
| Mar-81 | 129.5 | 1677.6 | 1248.8 | 8265854 | 1832783 | 7298687 | 13 |
| Feb-81 | 128.6 | 1661.6 | 1212 | 8227141 | 1828767 | 7246681 | 12.9 |

| | | | | | | | |
|--------|-------|--------|--------|---------|---------|---------|------|
| Jan-81 | 131.4 | 1680.7 | 1223.3 | 8193205 | 1825165 | 7200155 | 12.8 |
| Dec-80 | 130.6 | 1463.8 | 1006.8 | 8155283 | 1821091 | 7148054 | 11.2 |
| Nov-80 | 128 | 1365.5 | 919.3 | 8124073 | 1817043 | 7102676 | 10.7 |
| Oct-80 | 130 | 1356 | 1356 | 8096494 | 1813202 | 7061713 | 10.4 |
| Sep-80 | 128.9 | 1334.9 | 1334.9 | 8054458 | 1809171 | 7019676 | 10.4 |
| Aug-80 | 125.6 | 1221.4 | 1221.4 | 8014411 | 1805303 | 6979630 | 9.7 |
| Jul-80 | 133.3 | 1379.4 | 1379.4 | 7976547 | 1801411 | 6941766 | 10.3 |
| Jun-80 | 134.6 | 1437.2 | 1437.2 | 7933785 | 1797279 | 6899003 | 10.7 |
| May-80 | 133.1 | 1503.4 | 1503.4 | 7890669 | 1793242 | 6855887 | 11.3 |
| Apr-80 | 134.2 | 1496.5 | 1496.5 | 7844065 | 1789115 | 6809283 | 11.1 |
| Mar-80 | 136.7 | 1466.2 | 1466.2 | 7799170 | 1785088 | 6764389 | 10.7 |
| Feb-80 | 137.6 | 1455.5 | 1455.5 | 7753718 | 1780851 | 6718936 | 10.6 |
| Jan-80 | 136.1 | 1415.3 | 1415.3 | 7711507 | 1776861 | 6676726 | 10.4 |
| Dec-79 | 137.6 | 1313.7 | 1313.7 | 7667634 | 1772641 | 6632852 | 9.5 |
| Nov-79 | 135.2 | 1270.2 | 1270.2 | 7626910 | 1768376 | 6592126 | 9.4 |
| Oct-79 | 137.4 | 1330.5 | 1330.5 | 7588804 | 1764321 | 6554020 | 9.7 |
| Sep-79 | 127.5 | 1022 | 1022 | 7547557 | 1760061 | 6512774 | 8 |
| Aug-79 | 140.2 | 1268.9 | 1268.8 | 7516898 | 1756235 | 6482114 | 9 |
| Jul-79 | 139.9 | 1372.2 | 1372.2 | 7477563 | 1751888 | 6442780 | 9.8 |
| Jun-79 | 141.4 | 1430.3 | 1430.3 | 7435025 | 1747552 | 6400241 | 10.1 |
| May-79 | 142.1 | 1484.5 | 1484.5 | 7392115 | 1743311 | 6357331 | 10.4 |
| Apr-79 | 138.2 | 1403.4 | 1403.4 | 7346095 | 1738905 | 6311311 | 10.2 |
| Mar-79 | 139.5 | 1389.6 | 1389.6 | 7303993 | 1734758 | 6269209 | 10 |
| Feb-79 | 143.7 | 1479.8 | 1479.8 | 7260915 | 1730434 | 6226131 | 10.3 |
| Jan-79 | 142.1 | 1495.7 | 1495.7 | 7219481 | 1726411 | 6184696 | 10.5 |
| Dec-78 | 145.3 | 1454.8 | 1454.3 | 7173113 | 1722004 | 6138328 | 10 |
| Nov-78 | 145.8 | 1437.6 | 1437.3 | 7128028 | 1717500 | 6093229 | 9.9 |
| Oct-78 | 141.4 | 1227.1 | 1227.2 | 7084908 | 1713126 | 6050102 | 8.7 |
| Sep-78 | 143.4 | 1353.6 | 1353.6 | 7046866 | 1708744 | 6012060 | 9.4 |
| Aug-78 | 144.2 | 1359.1 | 1359.1 | 7006258 | 1704443 | 5971451 | 9.4 |
| Jul-78 | 143.3 | 1365.4 | 1365.4 | 6964124 | 1699973 | 5929318 | 9.5 |
| Jun-78 | 138.9 | 1339.9 | 1339.9 | 6921798 | 1695530 | 5886992 | 9.6 |
| May-78 | 139.6 | 1316 | 1316.1 | 6881601 | 1691362 | 5846796 | 9.4 |
| Apr-78 | 145.5 | 1267.7 | 1267.7 | 6840803 | 1687034 | 5805999 | 8.7 |
| Mar-78 | 146.4 | 1434.2 | 1434.2 | 6802772 | 1682668 | 5767968 | 9.8 |
| Feb-78 | 147.9 | 1421 | 1421 | 6758311 | 1678129 | 5723508 | 9.6 |
| Jan-78 | 147.4 | 1407.2 | 1407.3 | 6718522 | 1673988 | 5683720 | 9.5 |
| Dec-77 | 149.6 | 1437.1 | 1437.1 | 6674897 | 1669418 | 5640096 | 9.6 |
| Nov-77 | 154.9 | 1499.3 | 1499.4 | 6630346 | 1664778 | 5595546 | 9.7 |
| Oct-77 | 153.6 | 1350 | 1350 | 6585364 | 1660131 | 5550565 | 8.8 |
| Sep-77 | 151.7 | 1392.5 | 1392.6 | 6543513 | 1655370 | 5508715 | 9.2 |
| Aug-77 | 152 | 1375.6 | 1375.6 | 6501737 | 1650818 | 5466939 | 9.1 |
| Jul-77 | 150.2 | 1319.6 | 1319.5 | 6459094 | 1646107 | 5424297 | 8.8 |
| Jun-77 | 152.2 | 1360 | 1360 | 6418189 | 1641452 | 5383391 | 8.9 |
| May-77 | 154 | 1420.7 | 1420.7 | 6377389 | 1636887 | 5342591 | 9.2 |
| Apr-77 | 155.3 | 1469 | 1469 | 6333348 | 1632114 | 5298550 | 9.5 |
| Mar-77 | 155.6 | 1517.8 | 1517.8 | 6289277 | 1627455 | 5254479 | 9.8 |
| Feb-77 | 157.7 | 1540.9 | 1540.9 | 6242227 | 1622633 | 5207429 | 9.8 |
| Jan-77 | 156.3 | 1411.6 | 1411.6 | 6199083 | 1618218 | 5164285 | 9 |

| | | | | | | | |
|--------|-------|--------|--------|---------|---------|---------|-----|
| Dec-76 | 157.5 | 1421 | 1421 | 6155323 | 1613374 | 5120525 | 9 |
| Nov-76 | 154.6 | 1180.7 | 1180.7 | 6111272 | 1608492 | 5076474 | 7.6 |
| Oct-76 | 156.7 | 1224 | 1224 | 6075851 | 1603854 | 5041053 | 7.8 |
| Sep-76 | 160.9 | 1222.9 | 1222.9 | 6037907 | 1598997 | 5003108 | 7.6 |
| Aug-76 | 163 | 1289.2 | 1289.2 | 6001220 | 1594170 | 4966421 | 7.9 |
| Jul-76 | 157.5 | 1349.6 | 1349.6 | 5961255 | 1589118 | 4926455 | 8.6 |
| Jun-76 | 136.9 | 1173.7 | 1173.6 | 5919417 | 1584236 | 4884616 | 8.6 |
| May-76 | 130.3 | 1061.2 | 1061.4 | 5884207 | 1580129 | 4849407 | 8.1 |
| Apr-76 | 95.3 | 758.9 | 758.9 | 5851304 | 1576089 | 4816510 | 8 |
| Mar-76 | 163.4 | 1398.8 | 1398.8 | 5828535 | 1573229 | 4793742 | 8.6 |
| Feb-76 | 166.9 | 1365.8 | 1434.1 | 5785173 | 1568164 | 4750378 | 8.2 |
| Jan-76 | 171.4 | 1486.3 | 1486.3 | 5743583 | 1563325 | 4710771 | 8.7 |
| Dec-75 | 172.1 | 1419.3 | 1408.9 | 5697508 | 1558012 | 4664696 | 8.2 |
| Nov-75 | 174.4 | 1387.5 | 1387.5 | 5653830 | 1552677 | 4620697 | 8 |
| Oct-75 | 173.4 | 1345.2 | 1345.2 | 5612207 | 1547444 | 4579073 | 7.8 |
| Sep-75 | 180.5 | 1409 | 1409 | 5570507 | 1542068 | 4537373 | 7.8 |
| Aug-75 | 174.1 | 1222.5 | 1222.5 | 5528238 | 1536652 | 4495105 | 7 |
| Jul-75 | 175.6 | 1235.6 | 1235.5 | 5490340 | 1531256 | 4457206 | 7 |
| Jun-75 | 170 | 1180.5 | 1180.4 | 5452038 | 1525812 | 4418903 | 6.9 |
| May-75 | 173.2 | 1331.3 | 1331.3 | 5416625 | 1520712 | 4383490 | 7.7 |
| Apr-75 | 173.3 | 1289.9 | 1289.9 | 5375355 | 1515342 | 4342219 | 7.4 |
| Mar-75 | 178 | 1268.5 | 1268.5 | 5336659 | 1510142 | 4303522 | 7.1 |
| Feb-75 | 180.7 | 1294.6 | 1294.6 | 5297335 | 1504624 | 4264198 | 7.2 |
| Jan-75 | 182.2 | 1351.7 | 1351.7 | 5261087 | 1499564 | 4227949 | 7.4 |
| Dec-74 | 185.1 | 1317.3 | 1317.3 | 5219186 | 1493916 | 4186047 | 7.1 |
| Nov-74 | 192 | 1367.7 | 1367.7 | 5178350 | 1488178 | 4145211 | 7.1 |
| Oct-74 | 185.5 | 1324.2 | 1314.6 | 5137320 | 1482420 | 4104180 | 7.1 |
| Sep-74 | 189.1 | 1284.8 | 1279.6 | 5096568 | 1476670 | 4063131 | 6.8 |
| Aug-74 | 188.6 | 1175.2 | 1174.3 | 5058180 | 1470996 | 4024586 | 6.2 |
| Jul-74 | 180.5 | 1298.8 | 1295.5 | 5021776 | 1465150 | 3988154 | 7.2 |
| Jun-74 | 178.3 | 1128.8 | 1137.3 | 4981616 | 1459555 | 3947890 | 6.3 |
| May-74 | 164.3 | 1171.1 | 1181.7 | 4947498 | 1454205 | 3914026 | 7.1 |
| Apr-74 | 181.2 | 1317 | 1317 | 4910865 | 1449111 | 3877722 | 7.3 |
| Mar-74 | 186.3 | 1242.8 | 1242.7 | 4871355 | 1443675 | 3838211 | 6.7 |
| Feb-74 | 189.4 | 1301.4 | 1301.4 | 4832830 | 1437901 | 3799685 | 6.9 |
| Jan-74 | 180.4 | 869.4 | 869.4 | 4796391 | 1432598 | 3763247 | 4.8 |
| Dec-73 | 186 | 1161.4 | 1161.5 | 4769440 | 1427005 | 3736295 | 6.2 |
| Nov-73 | 200.2 | 1238.9 | 1239 | 4733435 | 1421239 | 3700293 | 6.2 |
| Oct-73 | 198 | 1251.3 | 1253.1 | 4696266 | 1415232 | 3663124 | 6.3 |
| Sep-73 | 191.5 | 1275.2 | 1273.2 | 4657420 | 1409093 | 3624332 | 6.7 |
| Aug-73 | 196.3 | 1227 | 1227.6 | 4619225 | 1403350 | 3586075 | 6.3 |
| Jul-73 | 195.9 | 1248.9 | 1247.6 | 4581167 | 1397265 | 3548037 | 6.4 |
| Jun-73 | 195.3 | 1132.2 | 1127.5 | 4542491 | 1391192 | 3509321 | 5.8 |
| May-73 | 191.9 | 1159.7 | 1152.5 | 4508666 | 1385335 | 3475356 | 6 |
| Apr-73 | 184.9 | 1013.3 | 1006.1 | 4472938 | 1379386 | 3439405 | 5.5 |
| Mar-73 | 170 | 855.3 | 847.9 | 4442754 | 1373838 | 3409006 | 5 |
| Feb-73 | 174.5 | 833.8 | 826.8 | 4416469 | 1368569 | 3382491 | 4.8 |
| Jan-73 | 180.4 | 890.1 | 882.6 | 4393319 | 1363683 | 3359145 | 4.9 |
| Dec-72 | 189.6 | 928 | 920.8 | 4365957 | 1358092 | 3331551 | 4.9 |

| | | | | | | | |
|--------|-------|--------|--------|---------|---------|---------|-----|
| Nov-72 | 176.5 | 860.8 | 852.2 | 4337411 | 1352215 | 3302783 | 4.9 |
| Oct-72 | 187.6 | 1143.2 | 1137.2 | 4311846 | 1346919 | 3276961 | 6.1 |
| Sep-72 | 196.5 | 1115.1 | 1106.9 | 4276594 | 1341102 | 3241520 | 5.7 |
| Aug-72 | 196 | 1126.7 | 1117.1 | 4243388 | 1335206 | 3208066 | 5.8 |
| Jul-72 | 195.2 | 1063.9 | 1053.8 | 4208758 | 1329132 | 3173137 | 5.4 |
| Jun-72 | 191.4 | 1064.9 | 1054.1 | 4176091 | 1323080 | 3140157 | 5.6 |
| May-72 | 195.4 | 1042.3 | 1031.2 | 4144468 | 1317337 | 3108209 | 5.3 |
| Apr-72 | 198.8 | 1064 | 1053.1 | 4112501 | 1311280 | 3075899 | 5.4 |
| Mar-72 | 200.4 | 1003.2 | 991.5 | 4080907 | 1305316 | 3043980 | 5 |
| Feb-72 | 181.1 | 816.4 | 803.5 | 4050171 | 1299105 | 3012879 | 4.5 |
| Jan-72 | 186.6 | 825.3 | 821.4 | 4026870 | 1293854 | 2989203 | 4.4 |
| Dec-71 | 183.8 | 749.7 | 764.5 | 4001407 | 1288071 | 2963619 | 4.1 |
| Nov-71 | 184.3 | 761.3 | 1078.4 | 3977707 | 1282374 | 2940378 | 4.1 |
| Oct-71 | 194.9 | 838.3 | 1114.9 | 3945354 | 1276846 | 2917538 | 4.3 |
| Sep-71 | 196.9 | 682 | 950.7 | 3910791 | 1270804 | 2891552 | 3.5 |
| Aug-71 | 196.7 | 663.4 | 925.6 | 3882269 | 1264897 | 2871094 | 3.4 |
| Jul-71 | 202.8 | 708.1 | 927.1 | 3853575 | 1258800 | 2850527 | 3.5 |
| Jun-71 | 197 | 756.8 | 1002.2 | 3824833 | 1252515 | 2828575 | 3.8 |
| May-71 | 197.1 | 739.7 | 1006.6 | 3794768 | 1246606 | 2805870 | 3.8 |
| Apr-71 | 205 | 812.2 | 1160.2 | 3763563 | 1240497 | 2782939 | 4 |
| Mar-71 | 200.6 | 733.5 | 1021.9 | 3728756 | 1234347 | 2758572 | 3.7 |
| Feb-71 | 203.3 | 738.7 | 1102.6 | 3697076 | 1228130 | 2735834 | 3.6 |
| Jan-71 | 201.3 | 704.2 | 1026.2 | 3666204 | 1222439 | 2715150 | 3.5 |
| Dec-70 | 200.4 | 682.8 | 1006.7 | 3634390 | 1216197 | 2693321 | 3.4 |
| Nov-70 | 194.1 | 697.2 | 1064.1 | 3603182 | 1209985 | 2672154 | 3.6 |
| Oct-70 | 199.3 | 645.4 | 1026.2 | 3571258 | 1204162 | 2651239 | 3.2 |
| Sep-70 | 196.1 | 631.4 | 926.4 | 3539445 | 1197984 | 2631230 | 3.2 |
| Aug-70 | 202.8 | 647.7 | 983.6 | 3511655 | 1192102 | 2612289 | 3.2 |
| Jul-70 | 201.6 | 610.3 | 1011.4 | 3481164 | 1185816 | 2592211 | 3 |
| Jun-70 | 205.6 | 675.8 | 1023 | 3449810 | 1179565 | 2573290 | 3.3 |
| May-70 | 195.8 | 659.8 | 1002.7 | 3419120 | 1173397 | 2553016 | 3.4 |
| Apr-70 | 198.4 | 603.3 | 1122.9 | 3388037 | 1167328 | 2532562 | 3 |
| Mar-70 | 218.9 | 654 | 1120.2 | 3354350 | 1161375 | 2514464 | 3 |
| Feb-70 | 220.8 | 686.1 | 1186.6 | 3319624 | 1154590 | 2494191 | 3.1 |
| Jan-70 | 228 | 757.1 | 1242.2 | 3286400 | 1148408 | 2474980 | 3.3 |
| Dec-69 | 224.6 | 820.3 | 1444.4 | 3247893 | 1141341 | 2451511 | 3.7 |
| Nov-69 | 213.3 | 755.7 | 1325 | 3203117 | 1134377 | 2426082 | 3.5 |
| Oct-69 | 210.4 | 792.9 | 1373.3 | 3163366 | 1127980 | 2403411 | 3.8 |
| Sep-69 | 206.1 | 814.2 | 1273.9 | 3120794 | 1121457 | 2378832 | 4 |
| Aug-69 | 213.7 | 733 | 1188 | 3082576 | 1115274 | 2354405 | 3.4 |
| Jul-69 | 209.4 | 736.8 | 1133.2 | 3045748 | 1108650 | 2331681 | 3.5 |
| Jun-69 | 208 | 784.2 | 1434.2 | 3010619 | 1102157 | 2308840 | 3.8 |
| May-69 | 208.2 | 772 | 1231.8 | 2967592 | 1095916 | 2285315 | 3.7 |
| Apr-69 | 200.6 | 729.8 | 1389.9 | 2929405 | 1089460 | 2261382 | 3.6 |
| Mar-69 | 207.6 | 769.6 | 1421.1 | 2887707 | 1083442 | 2239487 | 3.7 |
| Feb-69 | 206.1 | 801.4 | 1467.2 | 2843654 | 1077007 | 2215629 | 3.9 |
| Jan-69 | 212.7 | 783.4 | 1444.9 | 2802571 | 1071237 | 2193189 | 3.7 |
| Dec-68 | 214.1 | 774.7 | 1397.6 | 2757778 | 1064643 | 2168903 | 3.6 |
| Nov-68 | 202.9 | 749.5 | 1421.8 | 2714453 | 1058005 | 2144889 | 3.7 |

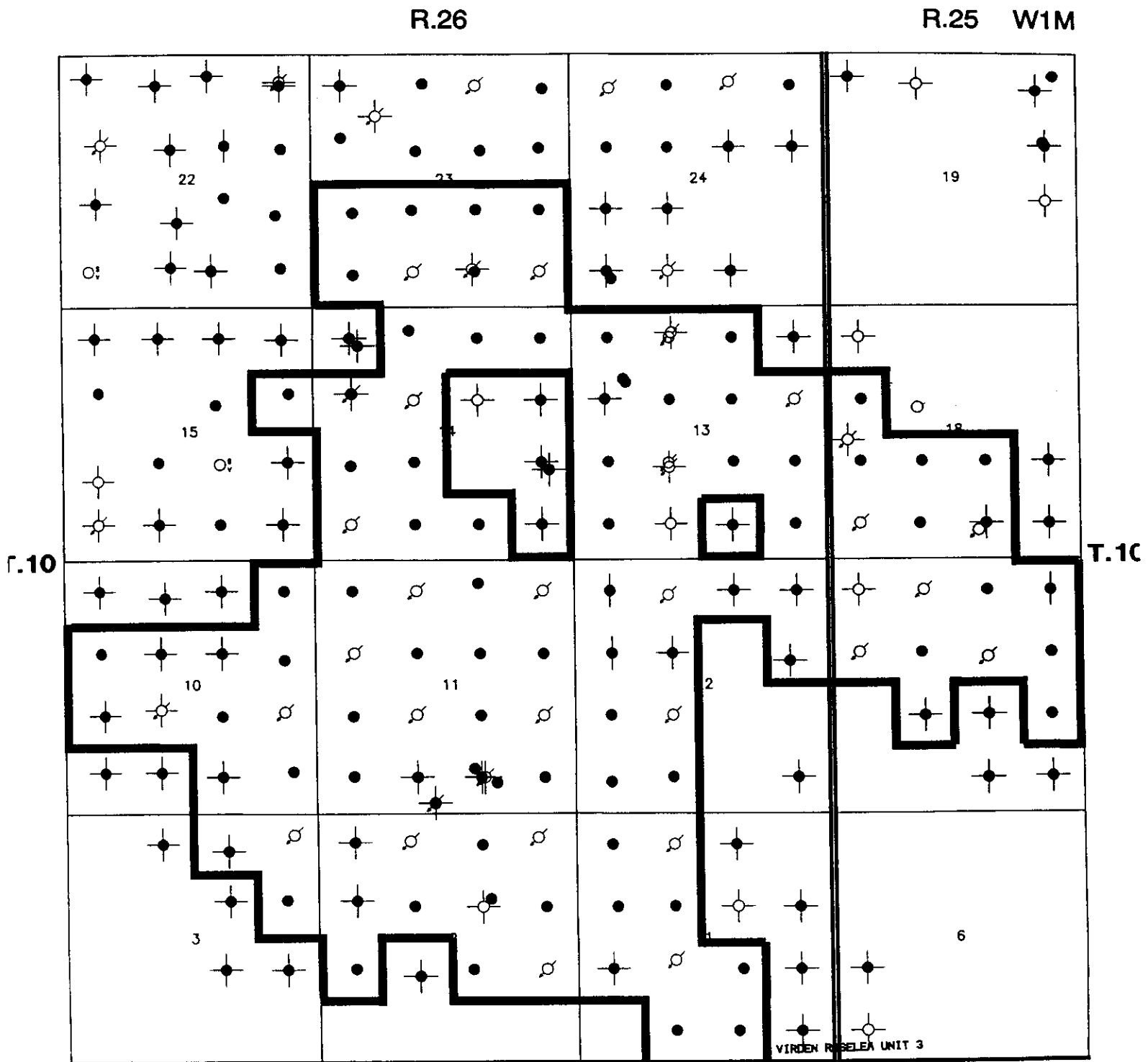
| | | | | | | | |
|--------|-------|-------|--------|---------|----------|---------|-----|
| Oct-68 | 198.9 | 719 | 1394.3 | 2671800 | 1051919 | 2122404 | 3.6 |
| Sep-68 | 185.4 | 624.6 | 1131.5 | 2628576 | 1045752 | 2100114 | 3.4 |
| Aug-68 | 203.1 | 744.8 | 1420.8 | 2594632 | 1040189 | 2081377 | 3.7 |
| Jul-68 | 200.3 | 760.5 | 1423.9 | 2550587 | 1033893 | 2058287 | 3.8 |
| Jun-68 | 200.7 | 729.1 | 1350.5 | 2506448 | 1027685 | 2034713 | 3.6 |
| May-68 | 193.7 | 684.6 | 1345.4 | 2465934 | 1021664 | 2012841 | 3.5 |
| Apr-68 | 189.4 | 667.2 | 1374.6 | 2424227 | 1015661 | 1991617 | 3.5 |
| Mar-68 | 170.3 | 675 | 1195.3 | 2382990 | 1009979 | 1971601 | 4 |
| Feb-68 | 167.5 | 628.4 | 1337.4 | 2345936 | 1004698 | 1950676 | 3.8 |
| Jan-68 | 150.9 | 590.2 | 1107.8 | 2307151 | 999841.3 | 1932453 | 3.9 |
| Dec-67 | 154.1 | 614.7 | 1109.6 | 2272810 | 995163.1 | 1914156 | 4 |
| Nov-67 | 143.8 | 585.8 | 1163.6 | 2238413 | 990386 | 1895102 | 4.1 |
| Oct-67 | 134.3 | 529 | 1137.4 | 2203505 | 986072 | 1877527 | 3.9 |
| Sep-67 | 124.2 | 441.5 | 1164.2 | 2168244 | 981908.3 | 1861127 | 3.6 |
| Aug-67 | 113 | 398.2 | 1013.6 | 2133319 | 978182 | 1847881 | 3.5 |
| Jul-67 | 106.5 | 391.4 | 628.4 | 2101897 | 974680.3 | 1835536 | 3.7 |
| Jun-67 | 104.3 | 358 | 381.6 | 2082418 | 971378.8 | 1823402 | 3.4 |
| May-67 | 105.3 | 393.2 | 370.5 | 2070971 | 968249.4 | 1812663 | 3.7 |
| Apr-67 | 120.8 | 475.7 | 457.6 | 2059486 | 964986.2 | 1800475 | 3.9 |
| Mar-67 | 123.8 | 462.6 | 455.9 | 2045757 | 961363.3 | 1786203 | 3.7 |
| Feb-67 | 122.9 | 436.3 | 428.3 | 2031624 | 957524.9 | 1771863 | 3.5 |
| Jan-67 | 121.3 | 385.8 | 378.7 | 2019631 | 954083.4 | 1759648 | 3.2 |
| Dec-66 | 116.7 | 367.4 | 274.8 | 2007893 | 950324.4 | 1747688 | 3.1 |
| Nov-66 | 131.8 | 426 | 374.9 | 1999375 | 946705.7 | 1736298 | 3.2 |
| Oct-66 | 137.7 | 429.3 | 407.3 | 1988127 | 942752.4 | 1723517 | 3.1 |
| Sep-66 | 145.7 | 470.8 | 471.2 | 1975502 | 938484.5 | 1710210 | 3.2 |
| Aug-66 | 149.4 | 479.6 | 476.3 | 1961367 | 934114.2 | 1696087 | 3.2 |
| Jul-66 | 151.2 | 480 | 477.6 | 1946602 | 929483 | 1681221 | 3.2 |
| Jun-66 | 146.4 | 493.1 | 502.2 | 1931797 | 924796.5 | 1666342 | 3.4 |
| May-66 | 146.8 | 495.7 | 512.8 | 1916731 | 920404 | 1651551 | 3.4 |
| Apr-66 | 144.5 | 475.4 | 473.1 | 1900834 | 915854.1 | 1636184 | 3.3 |
| Mar-66 | 154.5 | 492.7 | 472.6 | 1886641 | 911518.2 | 1621922 | 3.2 |
| Feb-66 | 151.1 | 495.9 | 483.8 | 1871990 | 906728.6 | 1606650 | 3.3 |
| Jan-66 | 154.1 | 536.2 | 504 | 1858443 | 902498.1 | 1592765 | 3.5 |
| Dec-65 | 160.1 | 537.7 | 481 | 1842819 | 897720.1 | 1576143 | 3.4 |
| Nov-65 | 170.9 | 537.5 | 476.5 | 1827909 | 892755.9 | 1559473 | 3.1 |
| Oct-65 | 167.5 | 510.4 | 507.6 | 1813613 | 887629.7 | 1543348 | 3 |
| Sep-65 | 179.2 | 509.7 | 501.5 | 1797878 | 882438.5 | 1527525 | 2.8 |
| Aug-65 | 171.7 | 520.9 | 541.3 | 1782832 | 877063.5 | 1512235 | 3 |
| Jul-65 | 174.9 | 529.6 | 566.3 | 1766052 | 871742.3 | 1496087 | 3 |
| Jun-65 | 172.4 | 513.3 | 553.2 | 1748498 | 866320.5 | 1479668 | 3 |
| May-65 | 178.9 | 514.3 | 518.5 | 1731903 | 861147.3 | 1464269 | 2.9 |
| Apr-65 | 153.4 | 490.9 | 493.7 | 1715830 | 855602.1 | 1448326 | 3.2 |
| Mar-65 | 145.6 | 454.1 | 468.2 | 1701019 | 850998.7 | 1433600 | 3.1 |
| Feb-65 | 147.3 | 458 | 473.5 | 1686504 | 846484.8 | 1419523 | 3.1 |
| Jan-65 | 150.1 | 483.5 | 471.8 | 1673246 | 842360.9 | 1406698 | 3.2 |
| Dec-64 | 154.3 | 507.4 | 497.2 | 1658619 | 837708.9 | 1391710 | 3.3 |
| Nov-64 | 152.1 | 483.9 | 470.5 | 1643208 | 832924.3 | 1375982 | 3.2 |
| Oct-64 | 160.2 | 478.9 | 464 | 1629094 | 828362.2 | 1361466 | 3 |

| | | | | | | | |
|--------|-------|-------|-------|----------|----------|----------|-----|
| Sep-64 | 166.3 | 493 | 475.6 | 1614710 | 823396.3 | 1346619 | 3 |
| Aug-64 | 159.5 | 454.7 | 438 | 1600443 | 818406 | 1331829 | 2.8 |
| Jul-64 | 153 | 396.1 | 409.9 | 1586866 | 813460.1 | 1317735 | 2.6 |
| Jun-64 | 151.7 | 442.7 | 411.9 | 1574160 | 808718 | 1305457 | 2.9 |
| May-64 | 148.5 | 416.1 | 409.6 | 1561803 | 804168 | 1292176 | 2.8 |
| Apr-64 | 150.2 | 403 | 377.5 | 1549105 | 799564.2 | 1279276 | 2.7 |
| Mar-64 | 152 | 413.8 | 401.2 | 1537780 | 795057 | 1267185 | 2.7 |
| Feb-64 | 158.3 | 449.5 | 406.1 | 1525344 | 790344.4 | 1254356 | 2.8 |
| Jan-64 | 148.5 | 398.5 | 381.2 | 1513567 | 785752.9 | 1241319 | 2.7 |
| Dec-63 | 141.7 | 368.6 | 351.7 | 1501750 | 781150.8 | 1228965 | 2.6 |
| Nov-63 | 148.1 | 396.1 | 377.6 | 1490848 | 776759 | 1217538 | 2.7 |
| Oct-63 | 155.3 | 418 | 404.9 | 1479520 | 772315.3 | 1205654 | 2.7 |
| Sep-63 | 156.7 | 396 | 394.3 | 1466968 | 767500.5 | 1192697 | 2.5 |
| Aug-63 | 158.6 | 403.8 | 398 | 1455139 | 762800.3 | 1180817 | 2.5 |
| Jul-63 | 165.8 | 410.2 | 393.7 | 1442802 | 757885 | 1168298 | 2.5 |
| Jun-63 | 162 | 421.5 | 427.9 | 1430596 | 752744.9 | 1155581 | 2.6 |
| May-63 | 171.1 | 434.4 | 428.6 | 1417761 | 747884.4 | 1142937 | 2.5 |
| Apr-63 | 169.2 | 416.6 | 370.2 | 1404476 | 742581.4 | 1129472 | 2.5 |
| Mar-63 | 163.1 | 402.5 | 357.9 | 1393371 | 737505.7 | 1116974 | 2.5 |
| Feb-63 | 160 | 415.1 | 372.6 | 1382275 | 732448.2 | 1104497 | 2.6 |
| Jan-63 | 162.4 | 422.7 | 377.5 | 1371841 | 727967.4 | 1092874 | 2.6 |
| Dec-62 | 167.1 | 429.8 | 410.8 | 1360138 | 722933.8 | 1079771 | 2.6 |
| Nov-62 | 176.1 | 439 | 393.9 | 1347404 | 717752.2 | 1066446 | 2.5 |
| Oct-62 | 180.2 | 445.8 | 403.8 | 1335587 | 712468.2 | 1053275 | 2.5 |
| Sep-62 | 187.6 | 462.5 | 428.5 | 1323068 | 706882.1 | 1039454 | 2.5 |
| Aug-62 | 187.9 | 453.6 | 415.4 | 1310214 | 701255.4 | 1025579 | 2.4 |
| Jul-62 | 194.7 | 467.9 | 459.3 | 1297338 | 695430 | 1011516 | 2.4 |
| Jun-62 | 194.8 | 443 | 456.3 | 1283099 | 689393.7 | 997012.1 | 2.3 |
| May-62 | 188.5 | 442.5 | 440.2 | 1269410 | 683550.6 | 983723 | 2.3 |
| Apr-62 | 190.6 | 437.4 | 401.9 | 1255763 | 677706.5 | 970005.6 | 2.3 |
| Mar-62 | 175.9 | 416.4 | 349.6 | 1243707 | 671989.3 | 956884.8 | 2.4 |
| Feb-62 | 184.7 | 408.8 | 357.2 | 1232871 | 666537.5 | 943977.5 | 2.2 |
| Jan-62 | 185.3 | 361.3 | 354.1 | 1222869 | 661366.2 | 932531.7 | 1.9 |
| Dec-61 | 194.4 | 407.1 | 356.6 | 1211890 | 655621.3 | 921331.7 | 2.1 |
| Nov-61 | 209.3 | 445.4 | 377.9 | 1200837 | 649593.9 | 908712.2 | 2.1 |
| Oct-61 | 198.2 | 441.7 | 409.5 | 1189501 | 643313.7 | 895351.3 | 2.2 |
| Sep-61 | 203.1 | 443.1 | 469.2 | 1176805 | 637168.2 | 881657.7 | 2.2 |
| Aug-61 | 201.1 | 454.3 | 439.2 | 1162728 | 631076.7 | 868365.7 | 2.3 |
| Jul-61 | 203.3 | 443.5 | 462.5 | 1149111 | 624842 | 854283.1 | 2.2 |
| Jun-61 | 199.6 | 497.1 | 564.3 | 1134772 | 618539 | 840536 | 2.5 |
| May-61 | 184.6 | 390.1 | 460.2 | 1117843 | 612552.1 | 825621.7 | 2.1 |
| Apr-61 | 190.4 | 429.3 | 458 | 1103578 | 606830 | 813529 | 2.3 |
| Mar-61 | 188.9 | 409 | 464.1 | 1089838 | 601117.2 | 800649.8 | 2.2 |
| Feb-61 | 194.7 | 414.6 | 481 | 1075452 | 595260.8 | 787971.1 | 2.1 |
| Jan-61 | 195 | 407.8 | 480 | 1061982 | 589810 | 776363.5 | 2.1 |
| Dec-60 | 202.1 | 421.7 | 473 | 1047104 | 583764.1 | 763722.6 | 2.1 |
| Nov-60 | 199.4 | 398.3 | 497.1 | 1032442 | 577498.1 | 750649.5 | 2 |
| Oct-60 | 203.6 | 418.4 | 565.7 | 1017528 | 571515.9 | 738701.3 | 2.1 |
| Sep-60 | 206 | 427.5 | 553.9 | 999989.8 | 565203.2 | 725729.5 | 2.1 |

| | | | | | | | |
|--------|-------|-------|-------|----------|----------|----------|-----|
| Aug-60 | 218.2 | 438.5 | 566.4 | 983371.6 | 559021.8 | 712905.7 | 2 |
| Jul-60 | 229.1 | 442.4 | 579.1 | 965813.7 | 552257 | 699313.6 | 1.9 |
| Jun-60 | 230.9 | 436.8 | 543.4 | 947863 | 545154.7 | 685599.4 | 1.9 |
| May-60 | 236 | 447.3 | 564.3 | 931562.4 | 538227.3 | 672496.4 | 1.9 |
| Apr-60 | 239.7 | 462.8 | 548.1 | 914067.6 | 530911 | 658630.9 | 1.9 |
| Mar-60 | 231.7 | 446.7 | 533.2 | 897626 | 523719.4 | 644748.4 | 1.9 |
| Feb-60 | 233.6 | 476.1 | 591.2 | 881097.1 | 516537.1 | 630899.5 | 2 |
| Jan-60 | 231.5 | 483.6 | 591.5 | 863953.6 | 509761.7 | 617092.2 | 2.1 |
| Dec-59 | 243.7 | 493.8 | 623.3 | 845615.7 | 502585.7 | 602102 | 2 |
| Nov-59 | 241.6 | 496.8 | 702.6 | 826292.4 | 495030.6 | 586794.1 | 2.1 |
| Oct-59 | 246.9 | 501.3 | 690.9 | 805214.9 | 487781.9 | 571889.1 | 2 |
| Sep-59 | 253.8 | 506.1 | 731.2 | 783796.2 | 480129.4 | 556348.6 | 2 |
| Aug-59 | 252.2 | 495.6 | 709.5 | 761859.5 | 472515.2 | 541165.6 | 2 |
| Jul-59 | 261.1 | 481.9 | 752.9 | 739866.2 | 464698.5 | 525800.7 | 1.8 |
| Jun-59 | 263.9 | 479.8 | 773.1 | 716525.1 | 456602.9 | 510860.4 | 1.8 |
| May-59 | 263.5 | 472.3 | 752.4 | 693333.3 | 448684.9 | 496465.2 | 1.8 |
| Apr-59 | 264.3 | 437.6 | 764.7 | 670008.7 | 440515.5 | 481823.2 | 1.7 |
| Mar-59 | 256.3 | 396.3 | 666.6 | 647068.3 | 432587.3 | 468694.4 | 1.5 |
| Feb-59 | 251.5 | 394.6 | 558.5 | 626402.6 | 424642.1 | 456410 | 1.6 |
| Jan-59 | 268.1 | 416.4 | 681.4 | 610766 | 417601.3 | 445360 | 1.6 |
| Dec-58 | 276.6 | 414.1 | 680.4 | 589641.4 | 409290 | 432451.3 | 1.5 |
| Nov-58 | 290 | 439.8 | 730.2 | 568548.6 | 400715.1 | 419614.8 | 1.5 |
| Oct-58 | 290.5 | 453 | 750.3 | 546643.8 | 392016.1 | 406421.4 | 1.6 |
| Sep-58 | 297.3 | 479.1 | 761.7 | 523384.5 | 383011.2 | 392378.5 | 1.6 |
| Aug-58 | 313.3 | 475.7 | 729.8 | 500534.9 | 374093.7 | 378005.1 | 1.5 |
| Jul-58 | 325.4 | 434.7 | 720.1 | 477909.6 | 364382.4 | 363258.2 | 1.3 |
| Jun-58 | 337.5 | 469.1 | 708.7 | 455585.5 | 354294 | 349782 | 1.4 |
| May-58 | 340.2 | 472.5 | 658.3 | 434323.3 | 344168.5 | 335709.3 | 1.4 |
| Apr-58 | 343.6 | 451.2 | 663.6 | 413914.5 | 333621.6 | 321062.9 | 1.3 |
| Mar-58 | 357.5 | 475.7 | 732.9 | 394007.3 | 323314.2 | 307526.5 | 1.3 |
| Feb-58 | 352.7 | 486.7 | 687.7 | 371288.5 | 312231 | 292781.2 | 1.4 |
| Jan-58 | 370.7 | 487.8 | 671.5 | 352032 | 302354.5 | 279152.3 | 1.3 |
| Dec-57 | 373.4 | 488.3 | 657 | 331216.9 | 290862.9 | 264029.9 | 1.3 |
| Nov-57 | 392.7 | 508.7 | 669.4 | 310850.8 | 279287.7 | 248893.8 | 1.3 |
| Oct-57 | 421.9 | 544.1 | 743 | 290767.8 | 267506.2 | 233632.8 | 1.3 |
| Sep-57 | 426 | 531.9 | 756.7 | 267734 | 254428 | 216765.9 | 1.2 |
| Aug-57 | 427.8 | 532 | 789 | 245034.3 | 241648.4 | 200808.4 | 1.2 |
| Jul-57 | 428.3 | 507.8 | 780.5 | 220574.3 | 228386.4 | 184315.5 | 1.2 |
| Jun-57 | 428.2 | 489.2 | 805.8 | 196379.4 | 215110.3 | 168574.6 | 1.1 |
| May-57 | 422.1 | 413.6 | 664.2 | 172204.4 | 202263 | 153899.7 | 1 |
| Apr-57 | 411.1 | 411.1 | 643.2 | 151615 | 189177.9 | 141079.3 | 1 |
| Mar-57 | 435.7 | 406.5 | 620.5 | 132318.2 | 176843.4 | 128747 | 0.9 |
| Feb-57 | 446.4 | 397.7 | 536.8 | 113082 | 163337.9 | 116145.3 | 0.9 |
| Jan-57 | 434.3 | 424.1 | 595.7 | 98053 | 150838.7 | 105008.8 | 1 |
| Dec-56 | 424.7 | 411.2 | 547.8 | 79587.2 | 137374.1 | 91862.3 | 1 |
| Nov-56 | 397.9 | 406 | 510.9 | 62604.7 | 124207.6 | 79116.6 | 1 |
| Oct-56 | 383.6 | 408.8 | 509 | 47277.8 | 112271.9 | 66937.8 | 1.1 |
| Sep-56 | 378.6 | 352.5 | 403.9 | 31498.7 | 100379.9 | 54264.4 | 0.9 |
| Aug-56 | 311.5 | 248.2 | 169.6 | 19380.4 | 89022.6 | 43690.8 | 0.8 |

| | | | | | | | |
|--------|-------|-------|-------|---------|---------|---------|-----|
| Jul-56 | 261.2 | 178.3 | 126.2 | 14123.6 | 79367.2 | 35995.3 | 0.7 |
| Jun-56 | 223.9 | 134.4 | 81.4 | 10210.9 | 71270.4 | 30467.8 | 0.6 |
| May-56 | 228 | 127.3 | 41.1 | 7768.7 | 64553.4 | 26434.3 | 0.6 |
| Apr-56 | 174.9 | 99.7 | 55.4 | 6495.1 | 57486.4 | 22488.4 | 0.6 |
| Mar-56 | 207 | 119.9 | 35.7 | 4833.7 | 52237.9 | 19497.6 | 0.6 |
| Feb-56 | 199.3 | 100.3 | 101.4 | 3727.7 | 45822.4 | 15780.7 | 0.5 |
| Jan-56 | 185.8 | 87.1 | 19.8 | 785.9 | 40042.5 | 12871 | 0.5 |
| Dec-55 | 152.7 | 61.8 | 5.6 | 173.6 | 34281.8 | 10172.4 | 0.4 |
| Nov-55 | 153.7 | 57.8 | 0 | 0 | 29548.3 | 8255.1 | 0.4 |
| Oct-55 | 113.6 | 50 | 0 | 0 | 24938 | 6521.6 | 0.4 |
| Sep-55 | 110.1 | 48.3 | 0 | 0 | 21415.1 | 4972 | 0.4 |
| Aug-55 | 113.1 | 33.8 | 0 | 0 | 18113.6 | 3524.3 | 0.3 |
| Jul-55 | 107 | 27.5 | 0 | 0 | 14607.6 | 2475.8 | 0.3 |
| Jun-55 | 93 | 20.7 | 0 | 0 | 11290.4 | 1623 | 0.2 |
| May-55 | 60.4 | 11.3 | 0 | 0 | 8501.6 | 1002.5 | 0.2 |
| Apr-55 | 48 | 6.7 | 0 | 0 | 6628.1 | 650.8 | 0.1 |
| Mar-55 | 63.6 | 7.6 | 0 | 0 | 5189.5 | 449.6 | 0.1 |
| Feb-55 | 47.6 | 5.6 | 0 | 0 | 3217.6 | 214.7 | 0.1 |
| Jan-55 | 27.4 | 1.3 | 0 | 0 | 1885.8 | 58.1 | 0 |
| Dec-54 | 26.1 | 0.6 | 0 | 0 | 1036.3 | 18.7 | 0 |
| Nov-54 | 7.6 | 0 | 0 | 0 | 228.4 | 0.5 | 0 |
| Oct-54 | 0 | 0 | 0 | 0 | 0 | 0 | 0 |

FIGURE 1

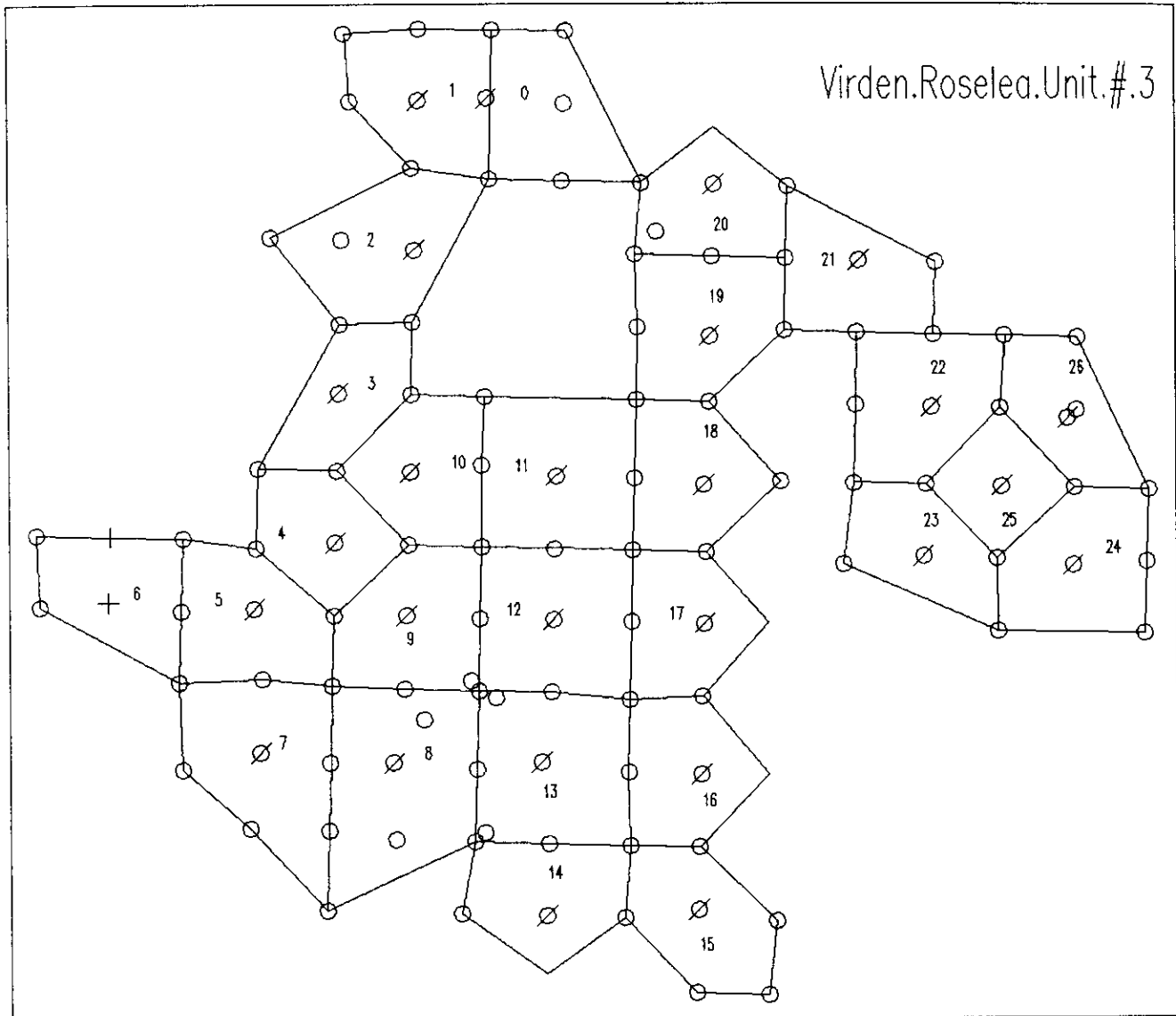


Map scale 1:35 000
March 1995

R.26

R.25 W1M

Virden, Manitoba
Roselea Unit No. 3



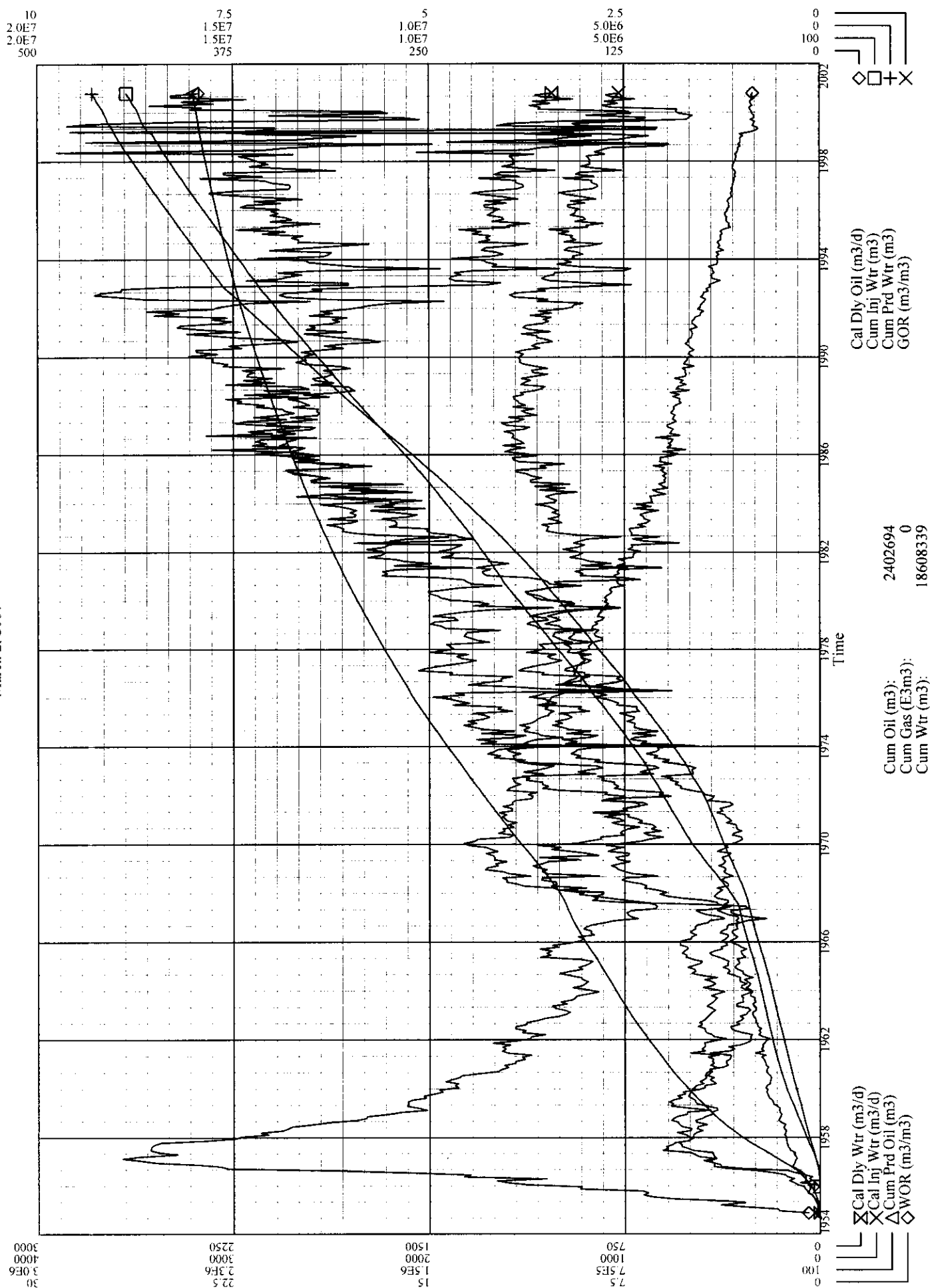
○ Oil Producer ∅ Water Injector + Plugged & Abandoned

TABLE 1

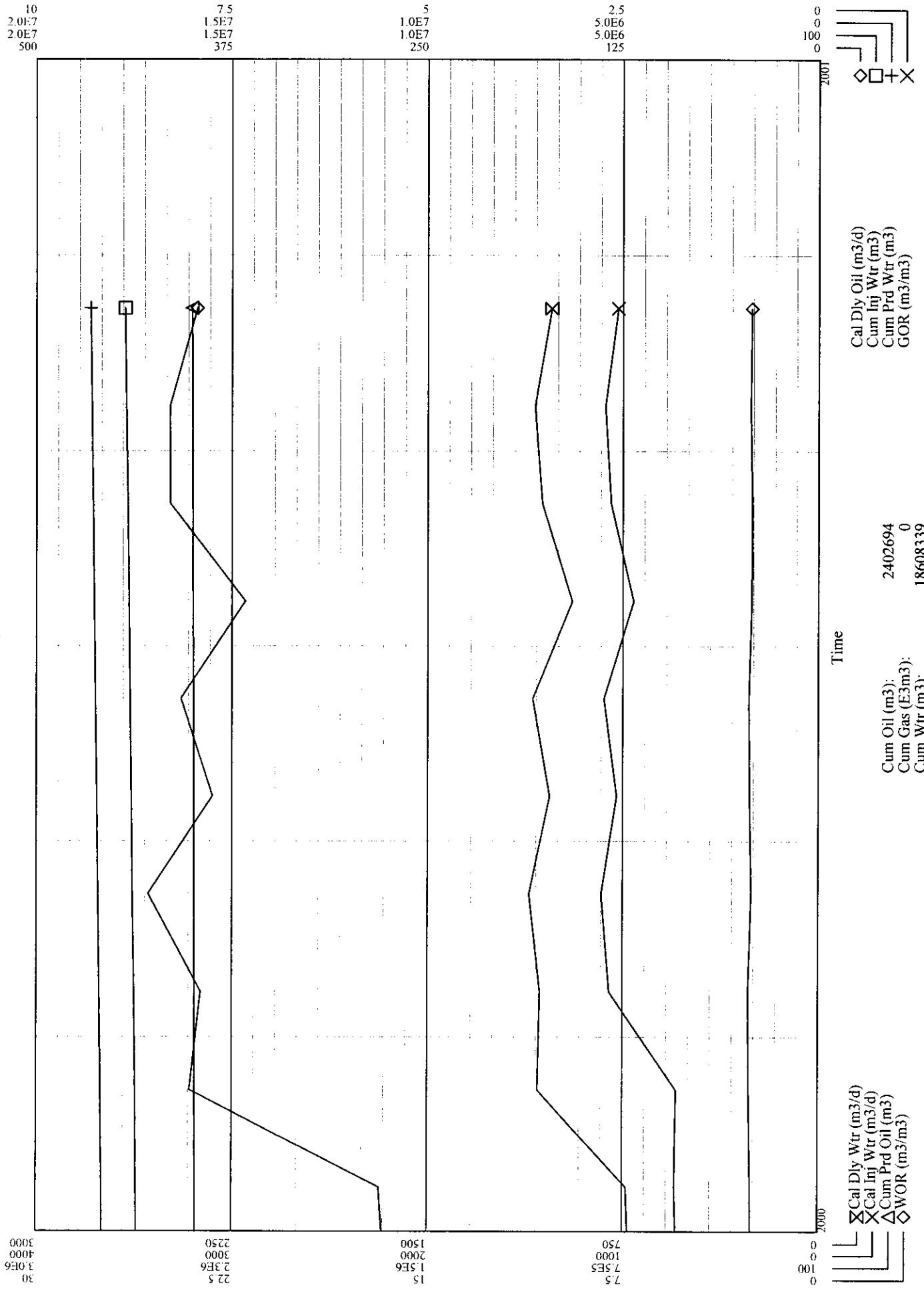
Virden Roselea Unit No. 3
Whole Project
Water Injector wells and corresponding patterns

| WELLS: | PATTERN: |
|----------------|----------|
| 03-23-10-26 W1 | 1 |
| 12-14-10-26 W1 | 2 |
| 04-14-10-26 W1 | 4 |
| 12-11-10-26 W1 | 5 |
| 08-10-10-26 W1 | 6 |
| 06-10-10-26 W1 | 7 |
| 16-03-10-26 W1 | 8 |
| 14-02-10-26 W1 | 9 |
| 06-11-10-26 W1 | 10 |
| 14-11-10-26 W1 | 11 |
| 16-11-10-26 W1 | 12 |
| 08-11-10-26 W1 | 13 |
| 16-02-10-26 W1 | 14 |
| 08-02-10-26 W1 | 15 |
| 06-01-10-26 W1 | 16 |
| 14-01-10-26 W1 | 17 |
| 06-12-10-26 W1 | 18 |
| 06-13-10-26 W1 | 19 |
| 14-13-10-26 W1 | 20 |
| 09-13-10-26 W1 | 21 |
| 04-18-10-25 W1 | 22 |
| 12-07-10-25 W1 | 23 |
| 10-07-10-25 W1 | 24 |
| 14-07-10-25 W1 | 25 |
| 02-18-10-25 W1 | 26 |

rose3.wls
March 2, 2001



rose3.wls
March 2, 2001



Report Date : 2001-Mar-02 @ 11:58:24 am

from : 2000-Jan-01 to : 2000-Dec-31

Battery: VR3 0211 | 100021101026W100

Well: VR3 0314 | 100031401026W100

Tests Required: 3

| Prod. Date | Test Hours | Fluid | BSW % | Oil | | Water | | Sand Cut | Sand | | Gas | | RM |
|-------------|------------|-------|-------|-------|-------|-------|-------|----------|------|-------|------|-------|----|
| | | | | Vol. | Rate | Vol. | Rate | | Vol. | Rate | Vol. | Rate | |
| 2000-May-26 | 24.00 | 13.23 | .00 | 13.23 | .5513 | .00 | .0000 | .00 | .00 | .0000 | .00 | .0000 | |

Well: VR3 0113 | 100011301026W100

Tests Required: 3

| Prod. Date | Test Hours | Fluid | BSW % | Oil | | Water | | Sand Cut | Sand | | Gas | | RM |
|-------------|------------|-------|-------|------|-------|-------|--------|----------|------|-------|------|-------|----|
| | | | | Vol. | Rate | Vol. | Rate | | Vol. | Rate | Vol. | Rate | |
| 2000-Jul-02 | 24.00 | 31.50 | 95.24 | 1.50 | .0625 | 30.00 | 1.2500 | .00 | .00 | .0000 | .02 | .0008 | |

Well: VR3 0318 | 100031801025W100

Tests Required: 3

| Prod. Date | Test Hours | Fluid | BSW % | Oil | | Water | | Sand Cut | Sand | | Gas | | RM |
|-------------|------------|-------|-------|------|-------|-------|-------|----------|------|-------|------|-------|----|
| | | | | Vol. | Rate | Vol. | Rate | | Vol. | Rate | Vol. | Rate | |
| 2000-May-26 | 24.00 | 10.73 | 98.00 | .21 | .0088 | 10.52 | .4383 | .00 | .00 | .0000 | .00 | .0000 | |

Well: VR3 0201 | 100020101026W100

Tests Required: 3

| Prod. Date | Test Hours | Fluid | BSW % | Oil | | Water | | Sand Cut | Sand | | Gas | | RM |
|-------------|------------|-------|-------|------|-------|-------|--------|----------|------|-------|------|-------|----|
| | | | | Vol. | Rate | Vol. | Rate | | Vol. | Rate | Vol. | Rate | |
| 2000-Jul-02 | 24.00 | 34.00 | 91.18 | 3.00 | .1250 | 31.00 | 1.2917 | .00 | .00 | .0000 | .05 | .0021 | |

Well: VR3 0223 | 102022301026W100

Tests Required: 3

| Prod. Date | Test Hours | Fluid | BSW % | Oil | | Water | | Sand Cut | Sand | | Gas | | RM |
|-------------|------------|-------|-------|------|-------|-------|-------|----------|------|-------|------|-------|----|
| | | | | Vol. | Rate | Vol. | Rate | | Vol. | Rate | Vol. | Rate | |
| 2000-May-26 | 24.00 | 12.91 | 95.00 | .65 | .0271 | 12.26 | .5108 | .00 | .00 | .0000 | .00 | .0000 | |

Well: VR3 0211A | 103021101026W100

Tests Required: 3

| Prod. Date | Test Hours | Fluid | BSW % | Oil | | Water | | Sand Cut | Sand | | Gas | | RM |
|-------------|------------|-------|-------|------|-------|-------|-------|----------|------|-------|------|-------|----|
| | | | | Vol. | Rate | Vol. | Rate | | Vol. | Rate | Vol. | Rate | |
| 2000-Aug-29 | 24.00 | 13.22 | 95.50 | .59 | .0246 | 12.63 | .5263 | .00 | .00 | .0000 | .01 | .0004 | |

Well: VR3 0423 | 100042301026W100

Tests Required: 3

| Prod. Date | Test Hours | Fluid | BSW % | Oil | | Water | | Sand Cut | Sand | | Gas | | RM |
|-------------|------------|-------|-------|------|-------|-------|-------|----------|------|-------|------|-------|----|
| | | | | Vol. | Rate | Vol. | Rate | | Vol. | Rate | Vol. | Rate | |
| 2000-May-26 | 24.00 | 13.45 | 90.50 | 1.28 | .0533 | 12.17 | .5071 | .00 | .00 | .0000 | .00 | .0000 | |

Well: VR3 0514 | 100051401026W100

Tests Required: 3

| Prod. Date | Test Hours | Fluid | BSW % | Oil | | Water | | Sand Cut | Sand | | Gas | | RM |
|-------------|------------|-------|-------|------|-------|-------|-------|----------|------|-------|------|-------|----|
| | | | | Vol. | Rate | Vol. | Rate | | Vol. | Rate | Vol. | Rate | |
| 2000-May-26 | 24.00 | 4.39 | 98.63 | .06 | .0025 | 4.33 | .1804 | .00 | .00 | .0000 | .00 | .0000 | |

Well: VR3 0518 | 100051801025W100

Tests Required: 3

| Prod. Date | Test Hours | Fluid | BSW % | Oil | | Water | | Sand Cut | Sand | | Gas | | RM |
|-------------|------------|-------|-------|------|-------|-------|-------|----------|------|-------|------|-------|----|
| | | | | Vol. | Rate | Vol. | Rate | | Vol. | Rate | Vol. | Rate | |
| 2000-May-26 | 24.00 | 1.00 | 80.00 | .20 | .0083 | .80 | .0333 | .00 | .00 | .0000 | .00 | .0000 | |

Well: VR3 0523 | 100052301026W100

Tests Required: 3

| Prod. Date | Test Hours | Fluid | BSW % | Oil | | Water | | Sand Cut | Sand | | Gas | | RM |
|-------------|------------|-------|-------|------|-------|-------|--------|----------|------|-------|------|-------|----|
| | | | | Vol. | Rate | Vol. | Rate | | Vol. | Rate | Vol. | Rate | |
| 2000-May-26 | 24.00 | 33.45 | 98.95 | .35 | .0146 | 33.10 | 1.3792 | .00 | .00 | .0000 | .00 | .0000 | |

Well: VR3 0301 | 100030101026W100

Tests Required: 3

| Prod. Date | Test Hours | Fluid | BSW % | Oil | | Water | | Sand Cut | Sand | | Gas | | RM |
|-------------|------------|-------|-------|------|-------|-------|--------|----------|------|-------|------|-------|----|
| | | | | Vol. | Rate | Vol. | Rate | | Vol. | Rate | Vol. | Rate | |
| 2000-Jul-02 | 24.00 | 37.00 | 93.24 | 2.50 | .1042 | 34.50 | 1.4375 | .00 | .00 | .0000 | .04 | .0017 | |

Well: VR3 0311A | 102031101026W102

Tests Required: 3

| Prod. Date | Test Hours | Fluid | BSW % | Oil | | Water | | Sand Cut | Sand | | Gas | | RM |
|-------------|------------|-------|-------|------|-------|-------|-------|----------|------|-------|------|-------|----|
| | | | | Vol. | Rate | Vol. | Rate | | Vol. | Rate | Vol. | Rate | |
| 2000-Aug-29 | 24.00 | 21.29 | 98.00 | .43 | .0179 | 20.86 | .8692 | .00 | .00 | .0000 | .01 | .0004 | |

Well: VR3 0614 | 100061401026W100

Tests Required: 3

| Prod. Date | Test Hours | Fluid | BSW % | Oil | | Water | | Sand Cut | Sand | | Gas | | RM |
|-------------|------------|-------|-------|------|-------|-------|-------|----------|------|-------|------|-------|----|
| | | | | Vol. | Rate | Vol. | Rate | | Vol. | Rate | Vol. | Rate | |
| 2000-May-26 | 24.00 | 11.63 | 97.16 | .33 | .0138 | 11.30 | .4708 | .00 | .00 | .0000 | .00 | .0000 | |

Report Date : 2001-Mar-02 @ 11:58:24 am

from : 2000-Jan-01 to : 2000-Dec-31

Battery: VR3 0211 | 100021101026W100

Well: VR3 0618 | 100061801025W100

Tests Required: 3

| Prod. Date | Test Hours | Fluid | BSW % | Oil | | Water | | Sand Cut | Sand | | Gas | | RM |
|-------------|------------|-------|-------|------|-------|-------|-------|----------|------|-------|------|-------|----|
| | | | | Vol. | Rate | Vol. | Rate | | Vol. | Rate | Vol. | Rate | |
| 2000-May-26 | 24.00 | 5.50 | 94.54 | .30 | .0125 | 5.20 | .2167 | .00 | .00 | .0000 | .00 | .0000 | |

Well: VR3 0623 | 100062301026W100

Tests Required: 3

| Prod. Date | Test Hours | Fluid | BSW % | Oil | | Water | | Sand Cut | Sand | | Gas | | RM |
|-------------|------------|-------|-------|------|-------|-------|-------|----------|------|-------|------|-------|----|
| | | | | Vol. | Rate | Vol. | Rate | | Vol. | Rate | Vol. | Rate | |
| 2000-May-26 | 24.00 | 11.87 | 98.15 | .22 | .0092 | 11.65 | .4854 | .00 | .00 | .0000 | .00 | .0000 | |

Well: VR3 0411 | 100041101026W100

Tests Required: 3

| Prod. Date | Test Hours | Fluid | BSW % | Oil | | Water | | Sand Cut | Sand | | Gas | | RM |
|-------------|------------|-------|-------|------|-------|-------|-------|----------|------|-------|------|-------|----|
| | | | | Vol. | Rate | Vol. | Rate | | Vol. | Rate | Vol. | Rate | |
| 2000-Aug-29 | 24.00 | 2.96 | 70.80 | .86 | .0358 | 2.10 | .0875 | .00 | .00 | .0000 | .01 | .0004 | |

Well: VR3 0718 | 100071801025W100

Tests Required: 3

| Prod. Date | Test Hours | Fluid | BSW % | Oil | | Water | | Sand Cut | Sand | | Gas | | RM |
|-------------|------------|-------|-------|------|-------|-------|-------|----------|------|-------|------|-------|----|
| | | | | Vol. | Rate | Vol. | Rate | | Vol. | Rate | Vol. | Rate | |
| 2000-May-26 | 24.00 | 19.46 | 98.71 | .25 | .0104 | 19.21 | .8004 | .00 | .00 | .0000 | .00 | .0000 | |

Well: VR3 0412 | 100041201026W100

Tests Required: 3

| Prod. Date | Test Hours | Fluid | BSW % | Oil | | Water | | Sand Cut | Sand | | Gas | | RM |
|-------------|------------|-------|-------|------|-------|-------|-------|----------|------|-------|------|-------|----|
| | | | | Vol. | Rate | Vol. | Rate | | Vol. | Rate | Vol. | Rate | |
| 2000-Jul-02 | 24.00 | 18.00 | 97.78 | .40 | .0167 | 17.60 | .7333 | .00 | .00 | .0000 | .01 | .0004 | |

Well: VR3 0723 | 100072301026W100

Tests Required: 3

| Prod. Date | Test Hours | Fluid | BSW % | Oil | | Water | | Sand Cut | Sand | | Gas | | RM |
|-------------|------------|-------|-------|------|-------|-------|-------|----------|------|-------|------|-------|----|
| | | | | Vol. | Rate | Vol. | Rate | | Vol. | Rate | Vol. | Rate | |
| 2000-May-26 | 24.00 | 9.98 | 96.09 | .39 | .0163 | 9.59 | .3996 | .00 | .00 | .0000 | .00 | .0000 | |

Well: VR3 0413 | 100041301026W100

Tests Required: 3

| Prod. Date | Test Hours | Fluid | BSW % | Oil | | Water | | Sand Cut | Sand | | Gas | | RM |
|-------------|------------|-------|-------|------|-------|-------|-------|----------|------|-------|------|-------|----|
| | | | | Vol. | Rate | Vol. | Rate | | Vol. | Rate | Vol. | Rate | |
| 2000-Jul-02 | 24.00 | 4.00 | 42.50 | 2.30 | .0958 | 1.70 | .0708 | .00 | .00 | .0000 | .04 | .0017 | |

Well: VR3 0807 | 100080701025W100

Tests Required: 3

| Prod. Date | Test Hours | Fluid | BSW % | Oil | | Water | | Sand Cut | Sand | | Gas | | RM |
|-------------|------------|-------|-------|------|-------|-------|-------|----------|------|-------|------|-------|----|
| | | | | Vol. | Rate | Vol. | Rate | | Vol. | Rate | Vol. | Rate | |
| 2000-May-26 | 24.00 | 16.72 | 96.59 | .57 | .0237 | 16.15 | .6729 | .00 | .00 | .0000 | .00 | .0000 | |

Well: VR3 0823 | 100082301026W100

Tests Required: 3

| Prod. Date | Test Hours | Fluid | BSW % | Oil | | Water | | Sand Cut | Sand | | Gas | | RM |
|-------------|------------|-------|-------|------|-------|-------|-------|----------|------|-------|------|-------|----|
| | | | | Vol. | Rate | Vol. | Rate | | Vol. | Rate | Vol. | Rate | |
| 2000-May-26 | 24.00 | 18.50 | 98.37 | .30 | .0125 | 18.20 | .7583 | .00 | .00 | .0000 | .00 | .0000 | |

Well: VR3 0907 | 100090701025W100

Tests Required: 3

| Prod. Date | Test Hours | Fluid | BSW % | Oil | | Water | | Sand Cut | Sand | | Gas | | RM |
|-------------|------------|-------|-------|------|-------|-------|-------|----------|------|-------|------|-------|----|
| | | | | Vol. | Rate | Vol. | Rate | | Vol. | Rate | Vol. | Rate | |
| 2000-May-26 | 24.00 | 7.10 | 98.59 | .10 | .0042 | 7.00 | .2917 | .00 | .00 | .0000 | .00 | .0000 | |

Well: VR3 0511 | 100051101026W100

Tests Required: 3

| Prod. Date | Test Hours | Fluid | BSW % | Oil | | Water | | Sand Cut | Sand | | Gas | | RM |
|-------------|------------|-------|-------|------|-------|-------|-------|----------|------|-------|------|-------|----|
| | | | | Vol. | Rate | Vol. | Rate | | Vol. | Rate | Vol. | Rate | |
| 2000-Aug-29 | 24.00 | 1.51 | 78.00 | .33 | .0138 | 1.18 | .0492 | .00 | .00 | .0000 | .01 | .0004 | |

Well: VR3 0512 | 100051201026W100

Tests Required: 3

| Prod. Date | Test Hours | Fluid | BSW % | Oil | | Water | | Sand Cut | Sand | | Gas | | RM |
|-------------|------------|-------|-------|------|-------|-------|-------|----------|------|-------|------|-------|----|
| | | | | Vol. | Rate | Vol. | Rate | | Vol. | Rate | Vol. | Rate | |
| 2000-Jul-02 | 24.00 | 4.00 | 95.00 | .20 | .0083 | 3.80 | .1583 | .00 | .00 | .0000 | .00 | .0000 | |

Well: VR3 0513 | 100051301026W100

Tests Required: 3

| Prod. Date | Test Hours | Fluid | BSW % | Oil | | Water | | Sand Cut | Sand | | Gas | | RM |
|-------------|------------|-------|-------|------|-------|-------|-------|----------|------|-------|------|-------|----|
| | | | | Vol. | Rate | Vol. | Rate | | Vol. | Rate | Vol. | Rate | |
| 2000-Jul-02 | 24.00 | 4.00 | 50.00 | 2.00 | .0833 | 2.00 | .0833 | .00 | .00 | .0000 | .03 | .0013 | |

Report Date : 2001-Mar-02 @ 11:58:24 am

from : 2000-Jan-01 to : 2000-Dec-31

Battery: VR3 0211 | 100021101026W100

Well: VR3 1013 | 100101301026W100

Tests Required: 3

| Prod. Date | Test Hours | Fluid | BSW % | Oil | | Water | | Sand Cut | Sand | | Gas | | RM |
|-------------|------------|-------|-------|------|-------|-------|-------|----------|------|-------|------|-------|----|
| | | | | Vol. | Rate | Vol. | Rate | | Vol. | Rate | Vol. | Rate | |
| 2000-May-26 | 24.00 | 20.68 | 97.96 | .42 | .0175 | 20.26 | .8442 | .00 | .00 | .0000 | .00 | .0000 | |

Well: VR3 0701 | 100070101026W100

Tests Required: 3

| Prod. Date | Test Hours | Fluid | BSW % | Oil | | Water | | Sand Cut | Sand | | Gas | | RM |
|-------------|------------|-------|-------|------|-------|-------|--------|----------|------|-------|------|-------|----|
| | | | | Vol. | Rate | Vol. | Rate | | Vol. | Rate | Vol. | Rate | |
| 2000-Jul-02 | 24.00 | 27.50 | 98.18 | .50 | .0208 | 27.00 | 1.1250 | .00 | .00 | .0000 | .01 | .0004 | |

Well: VR3 1107 | 100110701025W100

Tests Required: 3

| Prod. Date | Test Hours | Fluid | BSW % | Oil | | Water | | Sand Cut | Sand | | Gas | | RM |
|-------------|------------|-------|-------|------|-------|-------|--------|----------|------|-------|------|-------|----|
| | | | | Vol. | Rate | Vol. | Rate | | Vol. | Rate | Vol. | Rate | |
| 2000-May-26 | 24.00 | 31.67 | 99.30 | .22 | .0092 | 31.45 | 1.3104 | .00 | .00 | .0000 | .00 | .0000 | |

Well: VR3 1113 | 100111301026W100

Tests Required: 3

| Prod. Date | Test Hours | Fluid | BSW % | Oil | | Water | | Sand Cut | Sand | | Gas | | RM |
|-------------|------------|-------|-------|------|-------|-------|-------|----------|------|-------|------|-------|----|
| | | | | Vol. | Rate | Vol. | Rate | | Vol. | Rate | Vol. | Rate | |
| 2000-May-26 | 24.00 | 2.91 | 93.80 | .18 | .0075 | 2.73 | .1138 | .00 | .00 | .0000 | .00 | .0000 | |

Well: VR3 0710 | 100071001026W100

Tests Required: 3

| Prod. Date | Test Hours | Fluid | BSW % | Oil | | Water | | Sand Cut | Sand | | Gas | | RM |
|-------------|------------|-------|-------|------|-------|-------|--------|----------|------|-------|------|-------|----|
| | | | | Vol. | Rate | Vol. | Rate | | Vol. | Rate | Vol. | Rate | |
| 2000-Aug-29 | 24.00 | 82.48 | 98.70 | 1.07 | .0446 | 81.41 | 3.3921 | .00 | .00 | .0000 | .02 | .0008 | |

Well: VR3 1213D | 102121301026W100

Tests Required: 3

| Prod. Date | Test Hours | Fluid | BSW % | Oil | | Water | | Sand Cut | Sand | | Gas | | RM |
|-------------|------------|-------|-------|------|-------|-------|--------|----------|------|-------|------|-------|----|
| | | | | Vol. | Rate | Vol. | Rate | | Vol. | Rate | Vol. | Rate | |
| 2000-May-26 | 24.00 | 31.38 | 97.80 | .69 | .0287 | 30.69 | 1.2787 | .00 | .00 | .0000 | .00 | .0000 | |

Well: VR3 1218 | 100121801025W100

Tests Required: 3

| Prod. Date | Test Hours | Fluid | BSW % | Oil | | Water | | Sand Cut | Sand | | Gas | | RM |
|-------------|------------|-------|-------|------|-------|-------|-------|----------|------|-------|------|-------|----|
| | | | | Vol. | Rate | Vol. | Rate | | Vol. | Rate | Vol. | Rate | |
| 2000-May-26 | 24.00 | 8.77 | 83.69 | 1.43 | .0596 | 7.34 | .3058 | .00 | .00 | .0000 | .00 | .0000 | |

Well: VR3 0713 | 100071301026W100

Tests Required: 3

| Prod. Date | Test Hours | Fluid | BSW % | Oil | | Water | | Sand Cut | Sand | | Gas | | RM |
|-------------|------------|-------|-------|------|-------|-------|-------|----------|------|-------|------|-------|----|
| | | | | Vol. | Rate | Vol. | Rate | | Vol. | Rate | Vol. | Rate | |
| 2000-Jul-02 | 24.00 | 4.30 | 97.67 | .10 | .0042 | 4.20 | .1750 | .00 | .00 | .0000 | .00 | .0000 | |

Well: VR3 0813 | 100081301026W100

Tests Required: 3

| Prod. Date | Test Hours | Fluid | BSW % | Oil | | Water | | Sand Cut | Sand | | Gas | | RM |
|-------------|------------|-------|-------|------|-------|-------|-------|----------|------|-------|------|-------|----|
| | | | | Vol. | Rate | Vol. | Rate | | Vol. | Rate | Vol. | Rate | |
| 2000-Jul-02 | 24.00 | 24.00 | 87.92 | 2.90 | .1208 | 21.10 | .8792 | .00 | .00 | .0000 | .05 | .0021 | |

Well: VR3 1313 | 100131301026W100

Tests Required: 3

| Prod. Date | Test Hours | Fluid | BSW % | Oil | | Water | | Sand Cut | Sand | | Gas | | RM |
|-------------|------------|-------|-------|------|-------|-------|--------|----------|------|-------|------|-------|----|
| | | | | Vol. | Rate | Vol. | Rate | | Vol. | Rate | Vol. | Rate | |
| 2000-May-26 | 24.00 | 37.62 | 92.98 | 2.64 | .1100 | 34.98 | 1.4575 | .00 | .00 | .0000 | .00 | .0000 | |

Well: VR3 1414 | 100141401026W100

Tests Required: 3

| Prod. Date | Test Hours | Fluid | BSW % | Oil | | Water | | Sand Cut | Sand | | Gas | | RM |
|-------------|------------|-------|-------|------|-------|-------|--------|----------|------|-------|------|-------|----|
| | | | | Vol. | Rate | Vol. | Rate | | Vol. | Rate | Vol. | Rate | |
| 2000-May-26 | 24.00 | 32.00 | 98.00 | .64 | .0267 | 31.36 | 1.3067 | .00 | .00 | .0000 | .00 | .0000 | |

Well: VR3 1507 | 100150701025W100

Tests Required: 3

| Prod. Date | Test Hours | Fluid | BSW % | Oil | | Water | | Sand Cut | Sand | | Gas | | RM |
|-------------|------------|-------|-------|------|-------|-------|-------|----------|------|-------|------|-------|----|
| | | | | Vol. | Rate | Vol. | Rate | | Vol. | Rate | Vol. | Rate | |
| 2000-May-26 | 24.00 | 17.51 | 98.40 | .28 | .0117 | 17.23 | .7179 | .00 | .00 | .0000 | .00 | .0000 | |

Well: VR3 0910 | 100091001026W100

Tests Required: 3

| Prod. Date | Test Hours | Fluid | BSW % | Oil | | Water | | Sand Cut | Sand | | Gas | | RM |
|-------------|------------|-------|-------|------|-------|-------|--------|----------|------|-------|------|-------|----|
| | | | | Vol. | Rate | Vol. | Rate | | Vol. | Rate | Vol. | Rate | |
| 2000-Aug-29 | 24.00 | 52.68 | 97.25 | 1.45 | .0604 | 51.23 | 2.1346 | .00 | .00 | .0000 | .02 | .0008 | |

Report Date : 2001-Mar-02 @ 11:58:24 am

from : 2000-Jan-01 to : 2000-Dec-31

Battery: VR3 0211 | 100021101026W100

Well: VR3 1513 | 100151301026W100

Tests Required: 3

| Prod. Date | Test Hours | Fluid | BSW % | Oil | | Water | | Sand Cut | Sand | | Gas | | RM |
|-------------|------------|-------|-------|------|-------|-------|-------|----------|------|-------|------|-------|----|
| | | | | Vol. | Rate | Vol. | Rate | | Vol. | Rate | Vol. | Rate | |
| 2000-May-26 | 24.00 | 18.65 | 92.81 | 1.34 | .0558 | 17.31 | .7213 | .00 | .00 | .0000 | .00 | .0000 | |

Well: VR3 0911 | 100091101026W100

Tests Required: 3

| Prod. Date | Test Hours | Fluid | BSW % | Oil | | Water | | Sand Cut | Sand | | Gas | | RM |
|-------------|------------|-------|-------|------|-------|-------|-------|----------|------|-------|------|-------|----|
| | | | | Vol. | Rate | Vol. | Rate | | Vol. | Rate | Vol. | Rate | |
| 2000-Aug-29 | 24.00 | 4.94 | 88.00 | .59 | .0246 | 4.35 | .1813 | .00 | .00 | .0000 | .01 | .0004 | |

Well: VR3 1514 | 100151401026W100

Tests Required: 3

| Prod. Date | Test Hours | Fluid | BSW % | Oil | | Water | | Sand Cut | Sand | | Gas | | RM |
|-------------|------------|-------|-------|------|-------|-------|-------|----------|------|-------|------|-------|----|
| | | | | Vol. | Rate | Vol. | Rate | | Vol. | Rate | Vol. | Rate | |
| 2000-May-26 | 24.00 | 8.64 | 70.83 | 2.52 | .1050 | 6.12 | .2550 | .00 | .00 | .0000 | .00 | .0000 | |

Well: VR3 1607 | 100160701025W100

Tests Required: 3

| Prod. Date | Test Hours | Fluid | BSW % | Oil | | Water | | Sand Cut | Sand | | Gas | | RM |
|-------------|------------|-------|-------|------|-------|-------|-------|----------|------|-------|------|-------|----|
| | | | | Vol. | Rate | Vol. | Rate | | Vol. | Rate | Vol. | Rate | |
| 2000-May-26 | 24.00 | 16.46 | 93.44 | 1.08 | .0450 | 15.38 | .6408 | .00 | .00 | .0000 | .00 | .0000 | |

Well: VR3 1002A | 102100201026W100

Tests Required: 3

| Prod. Date | Test Hours | Fluid | BSW % | Oil | | Water | | Sand Cut | Sand | | Gas | | RM |
|-------------|------------|-------|-------|------|-------|-------|-------|----------|------|-------|------|-------|----|
| | | | | Vol. | Rate | Vol. | Rate | | Vol. | Rate | Vol. | Rate | |
| 2000-Aug-29 | 24.00 | 1.24 | 82.00 | .22 | .0092 | 1.02 | .0425 | .00 | .00 | .0000 | .00 | .0000 | |

Well: VR3 1614 | 100161401026W100

Tests Required: 3

| Prod. Date | Test Hours | Fluid | BSW % | Oil | | Water | | Sand Cut | Sand | | Gas | | RM |
|-------------|------------|-------|-------|------|-------|-------|-------|----------|------|-------|------|-------|----|
| | | | | Vol. | Rate | Vol. | Rate | | Vol. | Rate | Vol. | Rate | |
| 2000-May-26 | 24.00 | .50 | 60.00 | .20 | .0083 | .30 | .0125 | .00 | .00 | .0000 | .00 | .0000 | |

Well: VR3 1011 | 100101101026W100

Tests Required: 3

| Prod. Date | Test Hours | Fluid | BSW % | Oil | | Water | | Sand Cut | Sand | | Gas | | RM |
|-------------|------------|-------|-------|------|-------|-------|-------|----------|------|-------|------|-------|----|
| | | | | Vol. | Rate | Vol. | Rate | | Vol. | Rate | Vol. | Rate | |
| 2000-Aug-29 | 24.00 | 10.71 | 89.50 | 1.12 | .0467 | 9.59 | .3996 | .00 | .00 | .0000 | .02 | .0008 | |

Well: VR3 0214 | 100021401026W100

Tests Required: 3

| Prod. Date | Test Hours | Fluid | BSW % | Oil | | Water | | Sand Cut | Sand | | Gas | | RM |
|-------------|------------|-------|-------|------|-------|-------|-------|----------|------|-------|------|-------|----|
| | | | | Vol. | Rate | Vol. | Rate | | Vol. | Rate | Vol. | Rate | |
| 2000-May-26 | 24.00 | 11.49 | 86.16 | 1.59 | .0663 | 9.90 | .4125 | .00 | .00 | .0000 | .00 | .0000 | |

Well: VR3 1111 | 100111101026W100

Tests Required: 3

| Prod. Date | Test Hours | Fluid | BSW % | Oil | | Water | | Sand Cut | Sand | | Gas | | RM |
|-------------|------------|-------|-------|------|-------|-------|-------|----------|------|-------|------|-------|----|
| | | | | Vol. | Rate | Vol. | Rate | | Vol. | Rate | Vol. | Rate | |
| 2000-Aug-29 | 24.00 | 2.12 | 85.00 | .32 | .0133 | 1.80 | .0750 | .00 | .00 | .0000 | .01 | .0004 | |

Well: VR3 1201 | 100120101026W100

Tests Required: 3

| Prod. Date | Test Hours | Fluid | BSW % | Oil | | Water | | Sand Cut | Sand | | Gas | | RM |
|-------------|------------|-------|-------|------|-------|-------|-------|----------|------|-------|------|-------|----|
| | | | | Vol. | Rate | Vol. | Rate | | Vol. | Rate | Vol. | Rate | |
| 2000-Jul-02 | 24.00 | 18.50 | 94.59 | 1.00 | .0417 | 17.50 | .7292 | .00 | .00 | .0000 | .02 | .0008 | |

Well: VR3 1210 | 100121001026W100

Tests Required: 3

| Prod. Date | Test Hours | Fluid | BSW % | Oil | | Water | | Sand Cut | Sand | | Gas | | RM |
|-------------|------------|--------|-------|------|-------|--------|--------|----------|------|-------|------|-------|----|
| | | | | Vol. | Rate | Vol. | Rate | | Vol. | Rate | Vol. | Rate | |
| 2000-Jun-01 | 24.00 | 200.00 | 98.75 | 2.50 | .1042 | 197.50 | 8.2292 | .00 | .00 | .0000 | .04 | .0017 | |

Well: VR3 1212 | 100121201026W100

Tests Required: 3

| Prod. Date | Test Hours | Fluid | BSW % | Oil | | Water | | Sand Cut | Sand | | Gas | | RM |
|-------------|------------|-------|-------|------|-------|-------|-------|----------|------|-------|------|-------|----|
| | | | | Vol. | Rate | Vol. | Rate | | Vol. | Rate | Vol. | Rate | |
| 2000-Jul-02 | 24.00 | 17.50 | 92.57 | 1.30 | .0542 | 16.20 | .6750 | .00 | .00 | .0000 | .02 | .0008 | |

Well: VR3 1311 | 100131101026W100

Tests Required: 3

| Prod. Date | Test Hours | Fluid | BSW % | Oil | | Water | | Sand Cut | Sand | | Gas | | RM |
|-------------|------------|-------|-------|------|-------|-------|-------|----------|------|-------|------|-------|----|
| | | | | Vol. | Rate | Vol. | Rate | | Vol. | Rate | Vol. | Rate | |
| 2000-Aug-29 | 24.00 | 9.22 | 71.00 | 2.67 | .1113 | 6.55 | .2729 | .00 | .00 | .0000 | .04 | .0017 | |

Report Date : 2001-Mar-02 @ 11:58:24 am

from : 2000-Jan-01 to : 2000-Dec-31

Battery: VR3 0211 | 100021101026W100

Well: VR3 1312 | 100131201026W100

Tests Required: 3

| | | | | Oil | | Water | | Sand Cut | Sand | | Gas | | |
|-------------|------------|-------|-------|------|-------|-------|-------|----------|------|-------|------|-------|----|
| Prod. Date | Test Hours | Fluid | BSW % | Vol. | Rate | Vol. | Rate | | Vol. | Rate | Vol. | Rate | RM |
| 2000-Jul-02 | 24.00 | 10.00 | 95.00 | .50 | .0208 | 9.50 | .3958 | .00 | .00 | .0000 | .01 | .0004 | |

Well: VR3 1502 | 100150201026W100

Tests Required: 3

| | | | | Oil | | Water | | Sand Cut | Sand | | Gas | | |
|-------------|------------|-------|-------|------|-------|-------|-------|----------|------|-------|------|-------|----|
| Prod. Date | Test Hours | Fluid | BSW % | Vol. | Rate | Vol. | Rate | | Vol. | Rate | Vol. | Rate | RM |
| 2000-Aug-29 | 24.00 | 16.87 | 97.25 | .46 | .0192 | 16.41 | .6838 | .00 | .00 | .0000 | .01 | .0004 | |

Well: VR3 1511 | 100151101026W100

Tests Required: 3

| | | | | Oil | | Water | | Sand Cut | Sand | | Gas | | |
|-------------|------------|-------|-------|------|-------|-------|-------|----------|------|-------|------|-------|----|
| Prod. Date | Test Hours | Fluid | BSW % | Vol. | Rate | Vol. | Rate | | Vol. | Rate | Vol. | Rate | RM |
| 2000-Aug-29 | 24.00 | .94 | 58.00 | .39 | .0163 | .55 | .0229 | .00 | .00 | .0000 | .01 | .0004 | |

Well: VR3 1610 | 100161001026W100

Tests Required: 3

| | | | | Oil | | Water | | Sand Cut | Sand | | Gas | | |
|-------------|------------|-------|-------|------|-------|-------|-------|----------|------|-------|------|-------|----|
| Prod. Date | Test Hours | Fluid | BSW % | Vol. | Rate | Vol. | Rate | | Vol. | Rate | Vol. | Rate | RM |
| 2000-Aug-29 | 24.00 | 9.66 | 87.00 | 1.26 | .0525 | 8.40 | .3500 | .00 | .00 | .0000 | .02 | .0008 | |

Well: VR3 0110 | 100011001026W100

Tests Required: 3

| | | | | Oil | | Water | | Sand Cut | Sand | | Gas | | |
|-------------|------------|-------|-------|------|-------|-------|--------|----------|------|-------|------|-------|----|
| Prod. Date | Test Hours | Fluid | BSW % | Vol. | Rate | Vol. | Rate | | Vol. | Rate | Vol. | Rate | RM |
| 2000-Aug-29 | 24.00 | 73.46 | 97.80 | 1.62 | .0675 | 71.84 | 2.9933 | .00 | .00 | .0000 | .03 | .0013 | |

Report Date : 2001-Mar-02 @ 11:58:24 am

from : 2000-Jan-01 to : 2000-Dec-31

Battery: VR3 1514 | 100151401026W100

Well: VR3 0223 | 102022301026W100

Tests Required: 3

| Prod. Date | Test Hours | Fluid | BSW % | Oil | | Water | | Sand Cut | Sand | | Gas | | RM |
|-------------|------------|-------|-------|------|-------|-------|-------|----------|------|-------|------|-------|----|
| | | | | Vol. | Rate | Vol. | Rate | | Vol. | Rate | Vol. | Rate | |
| 2000-May-26 | 24.00 | 12.91 | 95.22 | .62 | .0258 | 12.29 | .5121 | .00 | .00 | .0000 | .01 | .0004 | |

Well: VR3 0314 | 100031401026W100

Tests Required: 3

| Prod. Date | Test Hours | Fluid | BSW % | Oil | | Water | | Sand Cut | Sand | | Gas | | RM |
|-------------|------------|-------|-------|------|-------|-------|-------|----------|------|-------|------|-------|----|
| | | | | Vol. | Rate | Vol. | Rate | | Vol. | Rate | Vol. | Rate | |
| 2000-Jun-13 | 24.00 | 10.95 | 92.58 | .81 | .0338 | 10.14 | .4225 | .00 | .00 | .0000 | .01 | .0004 | |

Well: VR3 0318 | 100031801025W100

Tests Required: 3

| Prod. Date | Test Hours | Fluid | BSW % | Oil | | Water | | Sand Cut | Sand | | Gas | | RM |
|-------------|------------|-------|-------|------|-------|-------|-------|----------|------|-------|------|-------|----|
| | | | | Vol. | Rate | Vol. | Rate | | Vol. | Rate | Vol. | Rate | |
| 2000-Jun-26 | 24.00 | 10.73 | 98.04 | .21 | .0088 | 10.52 | .4383 | .00 | .00 | .0000 | .00 | .0000 | |

Well: VR3 0423 | 100042301026W100

Tests Required: 3

| Prod. Date | Test Hours | Fluid | BSW % | Oil | | Water | | Sand Cut | Sand | | Gas | | RM |
|-------------|------------|-------|-------|------|-------|-------|-------|----------|------|-------|------|-------|----|
| | | | | Vol. | Rate | Vol. | Rate | | Vol. | Rate | Vol. | Rate | |
| 2000-May-26 | 24.00 | 13.45 | 90.56 | 1.27 | .0529 | 12.18 | .5075 | .00 | .00 | .0000 | .02 | .0008 | |

Well: VR3 0514 | 100051401026W100

Tests Required: 3

| Prod. Date | Test Hours | Fluid | BSW % | Oil | | Water | | Sand Cut | Sand | | Gas | | RM |
|-------------|------------|-------|-------|------|-------|-------|-------|----------|------|-------|------|-------|----|
| | | | | Vol. | Rate | Vol. | Rate | | Vol. | Rate | Vol. | Rate | |
| 2000-Jun-13 | 24.00 | 4.39 | 98.66 | .06 | .0025 | 4.33 | .1804 | .00 | .00 | .0000 | .00 | .0000 | |

Well: VR3 0523 | 100052301026W100

Tests Required: 3

| Prod. Date | Test Hours | Fluid | BSW % | Oil | | Water | | Sand Cut | Sand | | Gas | | RM |
|-------------|------------|-------|-------|------|-------|-------|--------|----------|------|-------|------|-------|----|
| | | | | Vol. | Rate | Vol. | Rate | | Vol. | Rate | Vol. | Rate | |
| 2000-May-26 | 24.00 | 33.45 | 98.94 | .35 | .0146 | 33.10 | 1.3792 | .00 | .00 | .0000 | .01 | .0004 | |

Well: VR3 0614 | 100061401026W100

Tests Required: 3

| Prod. Date | Test Hours | Fluid | BSW % | Oil | | Water | | Sand Cut | Sand | | Gas | | RM |
|-------------|------------|-------|-------|------|-------|-------|-------|----------|------|-------|------|-------|----|
| | | | | Vol. | Rate | Vol. | Rate | | Vol. | Rate | Vol. | Rate | |
| 2000-May-30 | 24.00 | 11.63 | 97.18 | .33 | .0138 | 11.30 | .4708 | .00 | .00 | .0000 | .01 | .0004 | |

Well: VR3 0623 | 100062301026W100

Tests Required: 3

| Prod. Date | Test Hours | Fluid | BSW % | Oil | | Water | | Sand Cut | Sand | | Gas | | RM |
|-------------|------------|-------|-------|------|-------|-------|-------|----------|------|-------|------|-------|----|
| | | | | Vol. | Rate | Vol. | Rate | | Vol. | Rate | Vol. | Rate | |
| 2000-May-26 | 24.00 | 11.87 | 98.14 | .22 | .0092 | 11.65 | .4854 | .00 | .00 | .0000 | .00 | .0000 | |

Well: VR3 0718 | 100071801025W100

Tests Required: 3

| Prod. Date | Test Hours | Fluid | BSW % | Oil | | Water | | Sand Cut | Sand | | Gas | | RM |
|-------------|------------|-------|-------|------|-------|-------|-------|----------|------|-------|------|-------|----|
| | | | | Vol. | Rate | Vol. | Rate | | Vol. | Rate | Vol. | Rate | |
| 2000-Jun-26 | 24.00 | 19.46 | 98.73 | .25 | .0104 | 19.21 | .8004 | .00 | .00 | .0000 | .00 | .0000 | |

Well: VR3 0723 | 100072301026W100

Tests Required: 3

| Prod. Date | Test Hours | Fluid | BSW % | Oil | | Water | | Sand Cut | Sand | | Gas | | RM |
|-------------|------------|-------|-------|------|-------|-------|-------|----------|------|-------|------|-------|----|
| | | | | Vol. | Rate | Vol. | Rate | | Vol. | Rate | Vol. | Rate | |
| 2000-May-26 | 24.00 | 9.98 | 96.10 | .39 | .0163 | 9.59 | .3996 | .00 | .00 | .0000 | .01 | .0004 | |

Well: VR3 0807 | 100080701025W100

Tests Required: 3

| Prod. Date | Test Hours | Fluid | BSW % | Oil | | Water | | Sand Cut | Sand | | Gas | | RM |
|-------------|------------|-------|-------|------|-------|-------|-------|----------|------|-------|------|-------|----|
| | | | | Vol. | Rate | Vol. | Rate | | Vol. | Rate | Vol. | Rate | |
| 2000-Jun-13 | 24.00 | 16.72 | 96.62 | .57 | .0237 | 16.15 | .6729 | .00 | .00 | .0000 | .01 | .0004 | |

Well: VR3 1013 | 100101301026W100

Tests Required: 3

| Prod. Date | Test Hours | Fluid | BSW % | Oil | | Water | | Sand Cut | Sand | | Gas | | RM |
|-------------|------------|-------|-------|------|-------|-------|-------|----------|------|-------|------|-------|----|
| | | | | Vol. | Rate | Vol. | Rate | | Vol. | Rate | Vol. | Rate | |
| 2000-Jun-26 | 24.00 | 20.68 | 97.96 | .42 | .0175 | 20.26 | .8442 | .00 | .00 | .0000 | .01 | .0004 | |

Well: VR3 1107 | 100110701025W100

Tests Required: 3

| Prod. Date | Test Hours | Fluid | BSW % | Oil | | Water | | Sand Cut | Sand | | Gas | | RM |
|-------------|------------|-------|-------|------|-------|-------|--------|----------|------|-------|------|-------|----|
| | | | | Vol. | Rate | Vol. | Rate | | Vol. | Rate | Vol. | Rate | |
| 2000-Jun-13 | 24.00 | 31.67 | 99.32 | .22 | .0092 | 31.45 | 1.3104 | .00 | .00 | .0000 | .00 | .0000 | |

Report Date : 2001-Mar-02 @ 11:58:24 am

from : 2000-Jan-01 to : 2000-Dec-31

Battery: VR3 1514 | 100151401026W100

Well: VR3 1113 | 100111301026W100

Tests Required: 3

| Prod. Date | Test Hours | Fluid | BSW % | Oil | | Water | | Sand Cut | Sand | | Gas | | RM |
|-------------|------------|-------|-------|------|-------|-------|-------|----------|------|-------|------|-------|----|
| | | | | Vol. | Rate | Vol. | Rate | | Vol. | Rate | Vol. | Rate | |
| 2000-Jun-13 | 24.00 | 2.91 | 93.78 | .18 | .0075 | 2.73 | .1138 | .00 | .00 | .0000 | .00 | .0000 | |

Well: VR3 1213D | 102121301026W100

Tests Required: 3

| Prod. Date | Test Hours | Fluid | BSW % | Oil | | Water | | Sand Cut | Sand | | Gas | | RM |
|-------------|------------|-------|-------|------|-------|-------|--------|----------|------|-------|------|-------|----|
| | | | | Vol. | Rate | Vol. | Rate | | Vol. | Rate | Vol. | Rate | |
| 2000-Jun-26 | 24.00 | 31.38 | 97.79 | .69 | .0287 | 30.69 | 1.2787 | .00 | .00 | .0000 | .01 | .0004 | |

Well: VR3 1218 | 100121801025W100

Tests Required: 3

| Prod. Date | Test Hours | Fluid | BSW % | Oil | | Water | | Sand Cut | Sand | | Gas | | RM |
|-------------|------------|-------|-------|------|-------|-------|-------|----------|------|-------|------|-------|----|
| | | | | Vol. | Rate | Vol. | Rate | | Vol. | Rate | Vol. | Rate | |
| 2000-Jun-26 | 24.00 | 8.77 | 83.68 | 1.43 | .0596 | 7.34 | .3058 | .00 | .00 | .0000 | .02 | .0008 | |

Well: VR3 1313 | 100131301026W100

Tests Required: 3

| Prod. Date | Test Hours | Fluid | BSW % | Oil | | Water | | Sand Cut | Sand | | Gas | | RM |
|-------------|------------|-------|-------|------|-------|-------|--------|----------|------|-------|------|-------|----|
| | | | | Vol. | Rate | Vol. | Rate | | Vol. | Rate | Vol. | Rate | |
| 2000-Jun-26 | 24.00 | 37.62 | 92.97 | 2.64 | .1100 | 34.98 | 1.4575 | .00 | .00 | .0000 | .04 | .0017 | |

Well: VR3 1414 | 100141401026W100

Tests Required: 3

| Prod. Date | Test Hours | Fluid | BSW % | Oil | | Water | | Sand Cut | Sand | | Gas | | RM |
|-------------|------------|-------|-------|------|-------|-------|--------|----------|------|-------|------|-------|----|
| | | | | Vol. | Rate | Vol. | Rate | | Vol. | Rate | Vol. | Rate | |
| 2000-May-30 | 24.00 | 32.00 | 98.00 | .64 | .0267 | 31.36 | 1.3067 | .00 | .00 | .0000 | .01 | .0004 | |

Well: VR3 1507 | 100150701025W100

Tests Required: 3

| Prod. Date | Test Hours | Fluid | BSW % | Oil | | Water | | Sand Cut | Sand | | Gas | | RM |
|-------------|------------|-------|-------|------|-------|-------|-------|----------|------|-------|------|-------|----|
| | | | | Vol. | Rate | Vol. | Rate | | Vol. | Rate | Vol. | Rate | |
| 2000-Jun-26 | 24.00 | 17.51 | 98.38 | .28 | .0117 | 17.23 | .7179 | .00 | .00 | .0000 | .00 | .0000 | |

Well: VR3 1513 | 100151301026W100

Tests Required: 3

| Prod. Date | Test Hours | Fluid | BSW % | Oil | | Water | | Sand Cut | Sand | | Gas | | RM |
|-------------|------------|-------|-------|------|-------|-------|-------|----------|------|-------|------|-------|----|
| | | | | Vol. | Rate | Vol. | Rate | | Vol. | Rate | Vol. | Rate | |
| 2000-Jun-26 | 24.00 | 18.65 | 92.82 | 1.34 | .0558 | 17.31 | .7213 | .00 | .00 | .0000 | .02 | .0008 | |

Well: VR3 1514 | 100151401026W100

Tests Required: 3

| Prod. Date | Test Hours | Fluid | BSW % | Oil | | Water | | Sand Cut | Sand | | Gas | | RM |
|-------------|------------|-------|-------|------|-------|-------|-------|----------|------|-------|------|-------|----|
| | | | | Vol. | Rate | Vol. | Rate | | Vol. | Rate | Vol. | Rate | |
| 2000-May-30 | 24.00 | 8.64 | 70.80 | 2.52 | .1050 | 6.12 | .2550 | .00 | .00 | .0000 | .04 | .0017 | |

Well: VR3 1607 | 100160701025W100

Tests Required: 3

| Prod. Date | Test Hours | Fluid | BSW % | Oil | | Water | | Sand Cut | Sand | | Gas | | RM |
|-------------|------------|-------|-------|------|-------|-------|-------|----------|------|-------|------|-------|----|
| | | | | Vol. | Rate | Vol. | Rate | | Vol. | Rate | Vol. | Rate | |
| 2000-Jun-26 | 24.00 | 16.46 | 93.43 | 1.08 | .0450 | 15.38 | .6408 | .00 | .00 | .0000 | .02 | .0008 | |

Well: VR3 0214 | 100021401026W100

Tests Required: 3

| Prod. Date | Test Hours | Fluid | BSW % | Oil | | Water | | Sand Cut | Sand | | Gas | | RM |
|-------------|------------|-------|-------|------|-------|-------|-------|----------|------|-------|------|-------|----|
| | | | | Vol. | Rate | Vol. | Rate | | Vol. | Rate | Vol. | Rate | |
| 2000-Jun-13 | 24.00 | 11.49 | 86.20 | 1.59 | .0663 | 9.90 | .4125 | .00 | .00 | .0000 | .03 | .0013 | |

The wellhead injection pressure for each injection well are as follows;

| Roselea #8 Inj wells supplied by 15 14 & 2-11 plants | | | | | | | | |
|--|-------|------------|--|--------|--|---------------|--|---------------|
| Date meters are read: | | 00-02-29 | | | | | | |
| Numb er | Well | Tb'g Press | | Hourly | | Allocation | | Pro- rated |
| | | kPa | | Rate | | Factor | | m3 |
| 1 | 6-1 | 3400 | | 6.5 | | 0.10220 13 | | 3256 |
| 2 | 14-1 | 2600 | | 3.1 | | 0.04874 21 | | 1553 |
| 3 | 8-2 | 3200 | | 0.6 | | 0.00943 4 | | 301 |
| 4 | 14-2 | 4000 | | 4.8 | | 0.07547 17 | | 2404 |
| 5 | 16-2 | 4200 | | 7.2 | | 0.11320 75 | | 3606 |
| 6 | 16-3 | 3600 | | 3.5 | | 0.05503 14 | | 1753 |
| 7 | 10-7 | 4000 | | 1.5 | | 0.02358 49 | | 751 |
| 8 | 12-7 | 4000 | | 0.3 | | 0.00471 7 | | 150 |
| 9 | 14-7 | 2800 | | 0.9 | | 0.01415 09 | | 451 |
| 10 | 8-10 | 3700 | | 4.2 | | 0.06603 77 | | 2104 |
| 11 | 6-11 | 2000 | | 4.4 | | 0.06918 24 | | 2204 |
| 12 | 8-11 | 5200 | | 0.1 | | 0.00157 23 | | 50 |
| 13 | 12-11 | 4600 | | 1.4 | | 0.02201 26 | | 701 |
| 14 | 14-11 | 3400 | | 0.5 | | 0.00786 16 | | 250 |
| 15 | 16-11 | 4000 | | 1.5 | | 0.02358 49 | | 751 |
| 16 | 6-12 | 2000? | | 1.5 | | 0.02358 49 | | 751 |
| 17 | 14-12 | 4300 | | 1 | | 0.01572 33 | | 501 |
| 18 | 6-13 | 4000 | | 0.4 | | 0.00628 93 | | 200 |
| 19 | 9-13 | 3500 | | 2.4 | | 0.03773 58 | | 1202 |
| 20 | 14-13 | 4500 | | 4.4 | | 0.06918 24 | | 2204 |
| 21 | 4-14 | 4200 | | 1.8 | | 0.02830 19 | | 902 |

| Roselea #3 Inj. wells supplied by 15-14 & 2-11 plants | | | | | | | | | |
|---|-------|------|--|------|-------|---------------|--|------|--|
| 22 | 11-14 | 3200 | | 1.3 | | 0.02044 03 | | 651 | |
| 23 | 4-18 | 3600 | | 3.3 | | 0.05188 68 | | 1653 | |
| 24 | 2A-18 | 3400 | | 4.4 | | 0.06918 24 | | 2204 | |
| 25 | 1-23 | 3200 | | 0.4 | | 0.00628 93 | | 200 | |
| 26 | 3-23 | 3400 | | 2.2 | | 0.03459 12 | | 1102 | |
| | | | | 63.6 | Total | 31856 | | | |

| Pump info. | Hours | m3/hr | | |
|------------|-------|-------|----------|----------|
| Pump # 1.0 | 425 | 21.5 | 9137.5 | 31856.15 |
| Pump # 2.0 | 500 | 23.39 | 11695 | |
| 15-14 Pump | 495 | 22.27 | 11023.65 | |

No pressure surveys were taken in 2000 in Roselea Unit#3.

Well servicing activities in Roselea Unit#3 are summarized in the following table;

| Field | Well | Job Type |
|-------|-------------|----------------|
| VR#3 | 4-13-10-26 | PR,LINER |
| VR#3 | 13-23-10-26 | PC,TAG |
| VR#3 | 8-11-10-26 | replace packer |
| VR#3 | 8-11-10-26 | repair packer |
| VR#3 | 4-13-10-26 | Hot water |